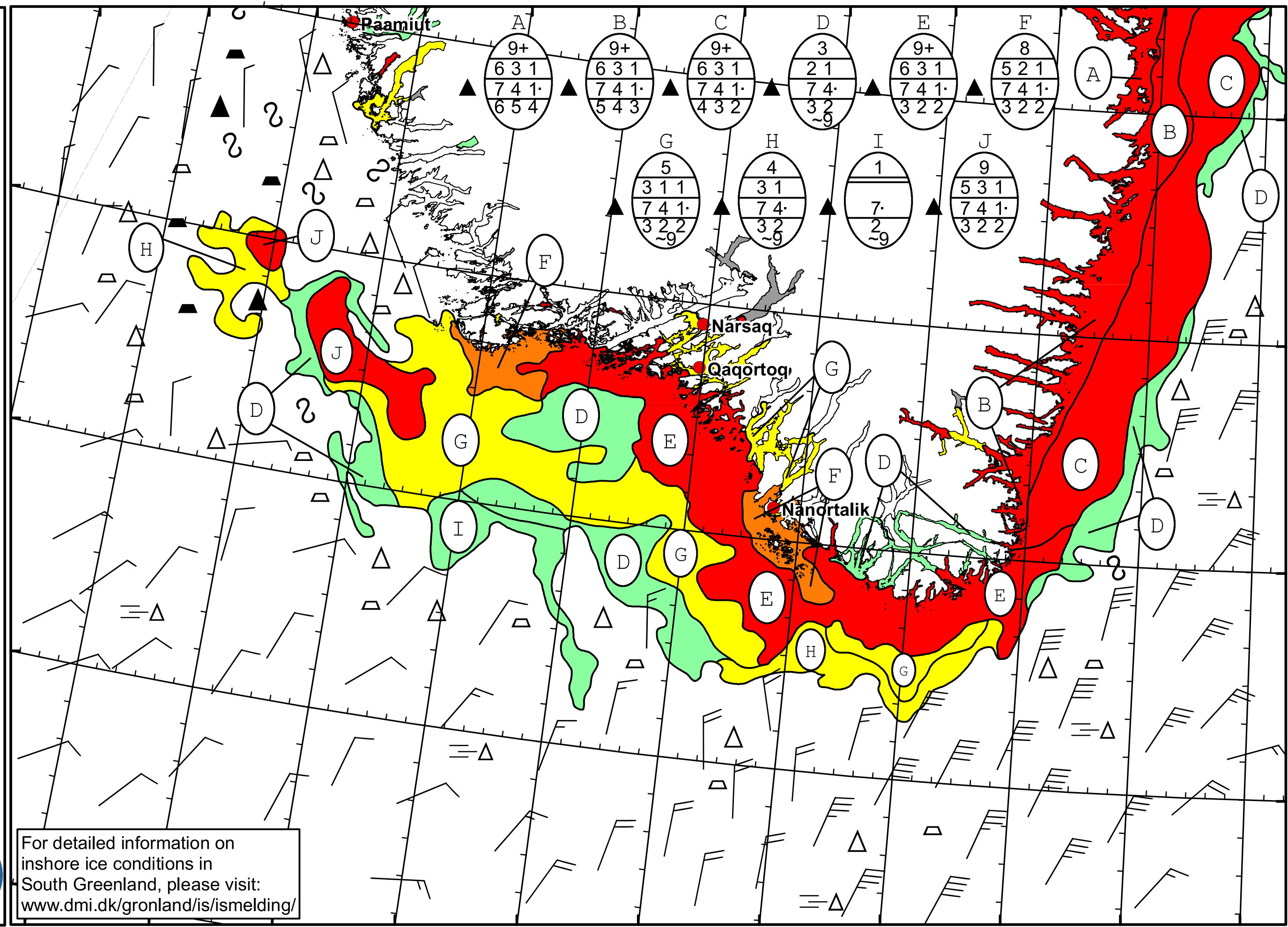


52°W 51°W 50°W 49°W 48°W 47°W 46°W 45°W 44°W 43°W 42°W 41°W



Cape Farewell Ice Chart
 Valid: 02 April 2023, 21:10 UTC
 Next Chart: 04 April 2023

For detailed information on inshore ice conditions in South Greenland, please visit: www.dmi.dk/gronland/is/ismelding/



51°W 50°W 49°W 48°W 47°W 46°W 45°W 44°W 43°W 42°W 41°W