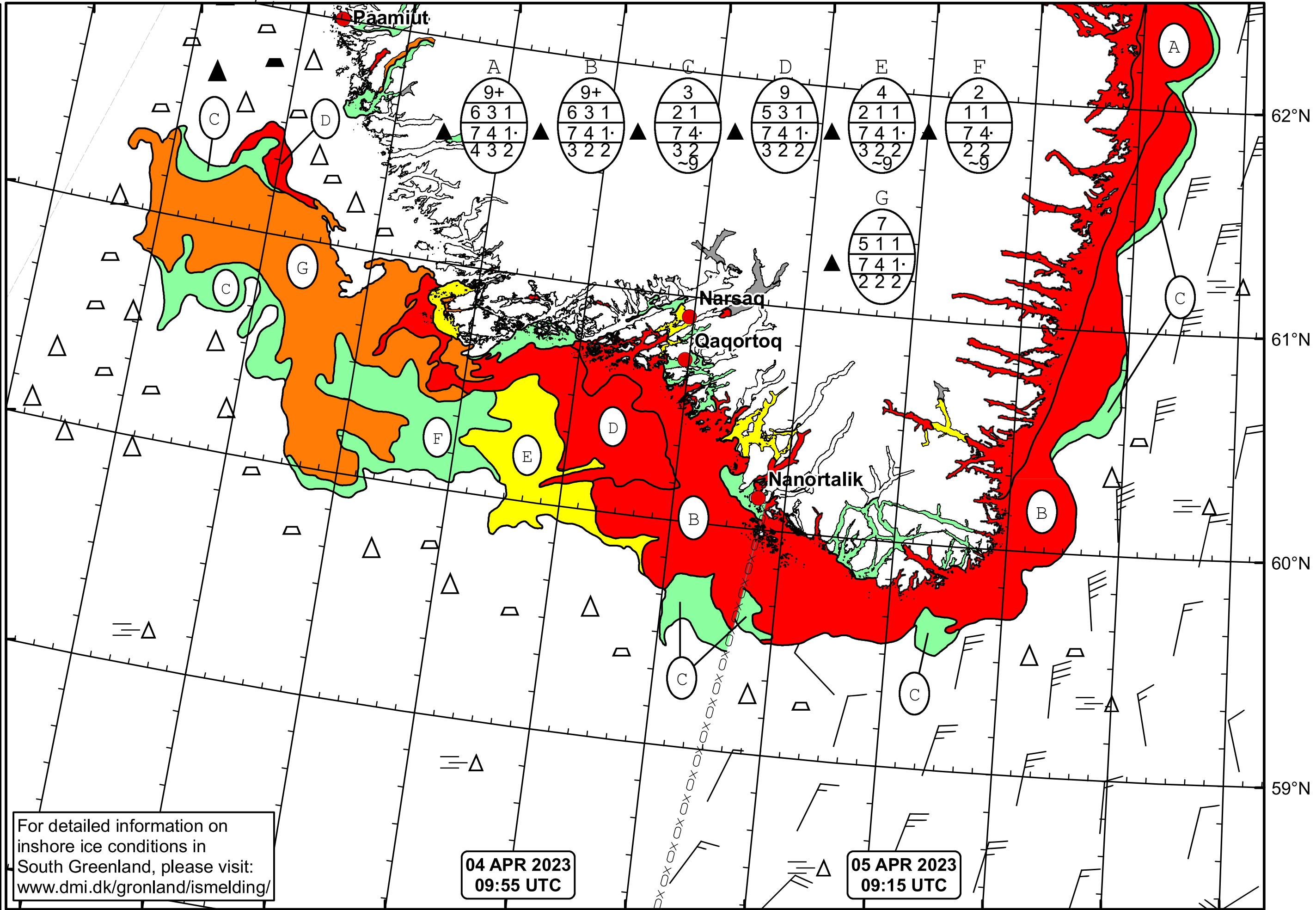




52°W 51°W 50°W 49°W 48°W 47°W 46°W 45°W 44°W 43°W 42°W 41°W



 DMI
 Ice Service
 Cape Farewell Ice Chart
 Danish Meteorological Institute
 Valid: 05 April 2023, 09:15 UTC
 Next Chart: 06 April 2023

For detailed information on inshore ice conditions in South Greenland, please visit: www.dmi.dk/gronland/ismelding/

04 APR 2023
09:55 UTC

05 APR 2023
09:15 UTC

51°W 50°W 49°W 48°W 47°W 46°W 45°W 44°W 43°W 42°W 41°W