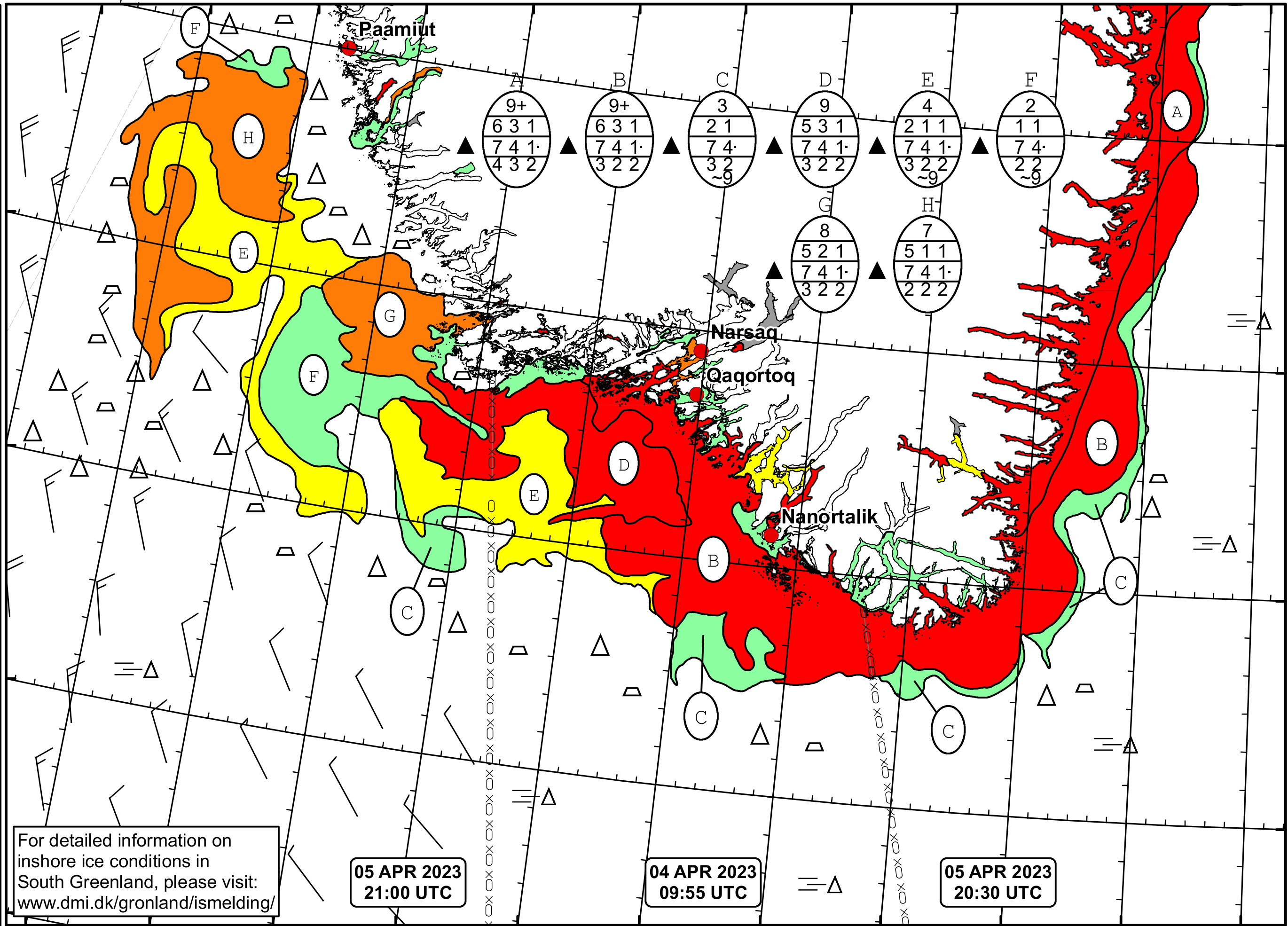




52°W 51°W 50°W 49°W 48°W 47°W 46°W 45°W 44°W 43°W 42°W 41°W




  
 DMI
   

  
 Ice Service
   
 Danish Meteorological Institute
   
 Cape Farewell Ice Chart
   
 Valid: 05 April 2023, 21:00 UTC
   
 Next Chart: 07 April 2023

For detailed information on inshore ice conditions in South Greenland, please visit: [www.dmi.dk/gronland/ismelding/](http://www.dmi.dk/gronland/ismelding/)

05 APR 2023  
21:00 UTC

04 APR 2023  
09:55 UTC

05 APR 2023  
20:30 UTC

51°W 50°W 49°W 48°W 47°W 46°W 45°W 44°W 43°W 42°W 41°W