



53°W 52°W 51°W 50°W 49°W 48°W 47°W 46°W 45°W 44°W 43°W 42°W 41°W



 DMI



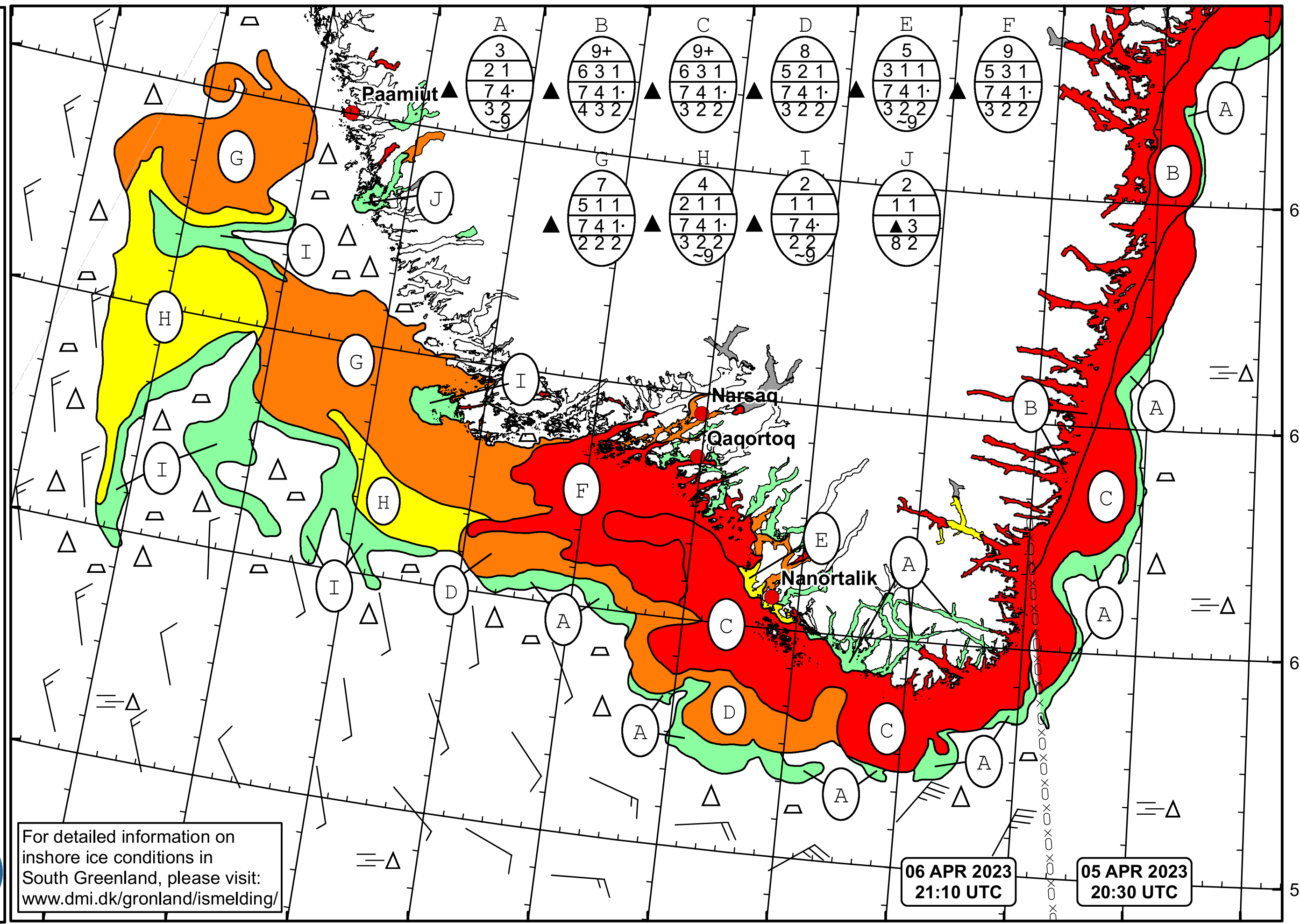
 Ice Service

 Cape Farewell Ice Chart

 Danish Meteorological Institute

 Valid: 06 April 2023, 21:10 UTC

 Next Chart: 08 April 2023



For detailed information on inshore ice conditions in South Greenland, please visit: www.dmi.dk/gronland/ismelding/

