


52°W 51°W 50°W 49°W 48°W 47°W 46°W 45°W 44°W 43°W 42°W 41°W



 DMI


 Ice Service

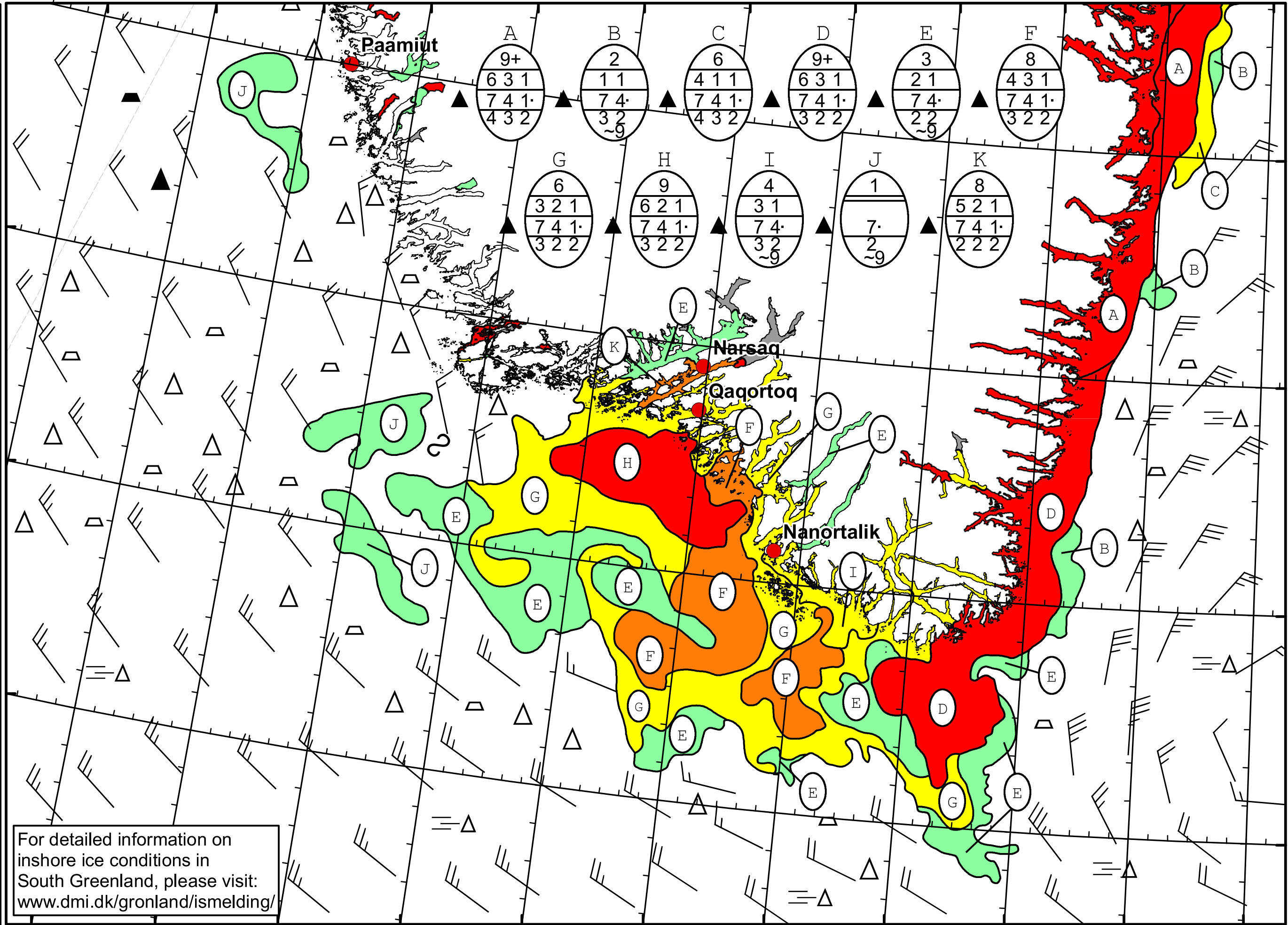
 Danish Meteorological Institute

 Cape Farewell Ice Chart

 Valid: 10 April 2023, 20:40 UTC

 Next Chart: 13 April 2023





For detailed information on
 inshore ice conditions in
 South Greenland, please visit:
www.dmi.dk/gronland/ismelding/

51°W 50°W 49°W 48°W 47°W 46°W 45°W 44°W 43°W 42°W 41°W