

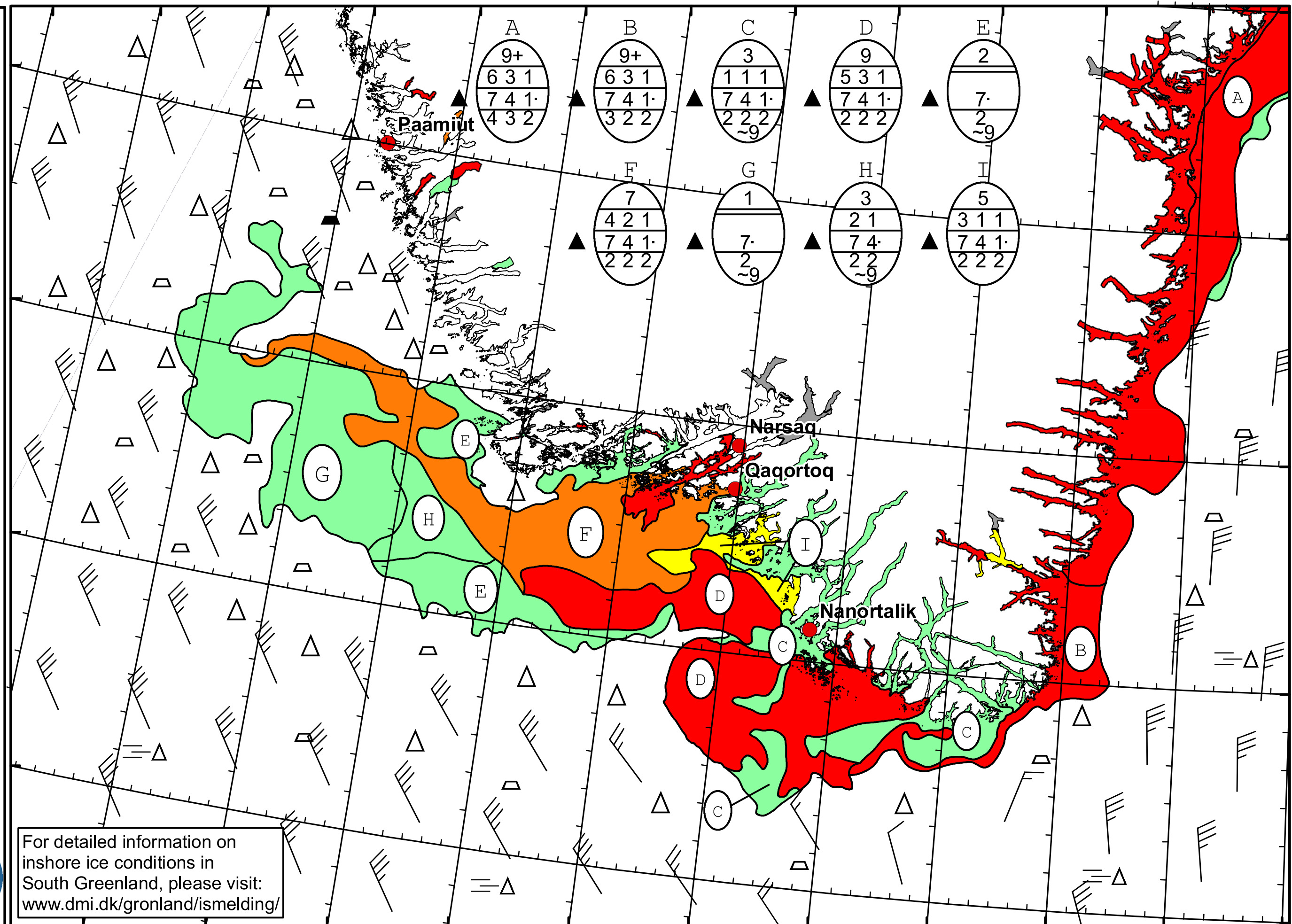


53°W 52°W 51°W 50°W 49°W 48°W 47°W 46°W 45°W 44°W 43°W 42°W

63°N
62°N
61°N
60°N



DMI
 Ice Service
Danish Meteorological Institute
Cape Farewell Ice Chart
 Valid: 17 April 2023, 09:10 UTC
 Next Chart: 18 April 2023



For detailed information on inshore ice conditions in South Greenland, please visit: www.dmi.dk/gronland/ismelding/

51°W 50°W 49°W 48°W 47°W 46°W 45°W 44°W 43°W 42°W 41°W