
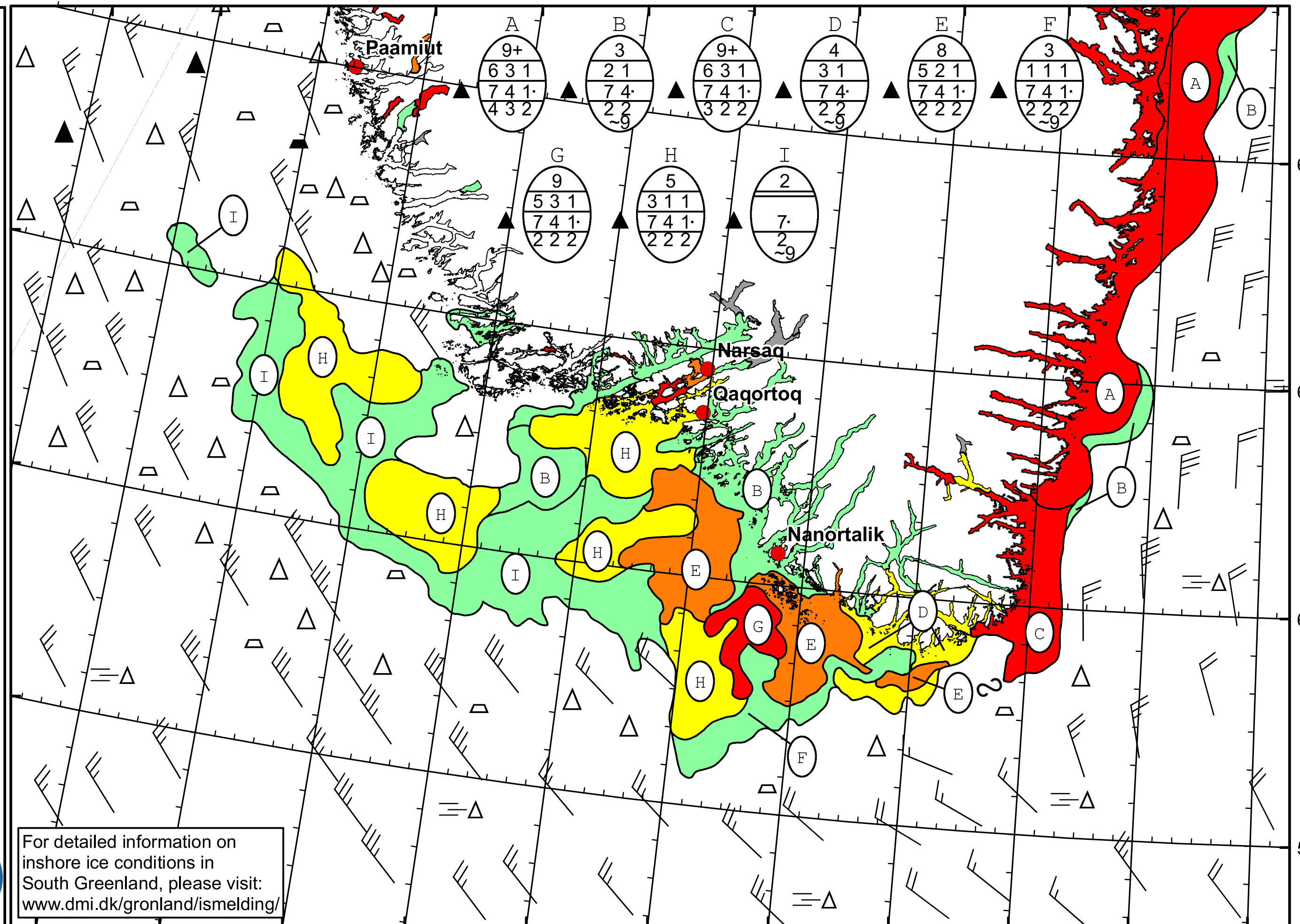


52°W 51°W 50°W 49°W 48°W 47°W 46°W 45°W 44°W 43°W 42°W 41°W

 **DMI**  
 Ice Service  
 Danish Meteorological Institute  
**Cape Farewell Ice Chart**  
 Valid: 17 April 2023, 20:25 UTC  
 Next Chart: 19 April 2023



For detailed information on inshore ice conditions in South Greenland, please visit: [www.dmi.dk/gronland/ismelding/](http://www.dmi.dk/gronland/ismelding/)

51°W 50°W 49°W 48°W 47°W 46°W 45°W 44°W 43°W 42°W 41°W