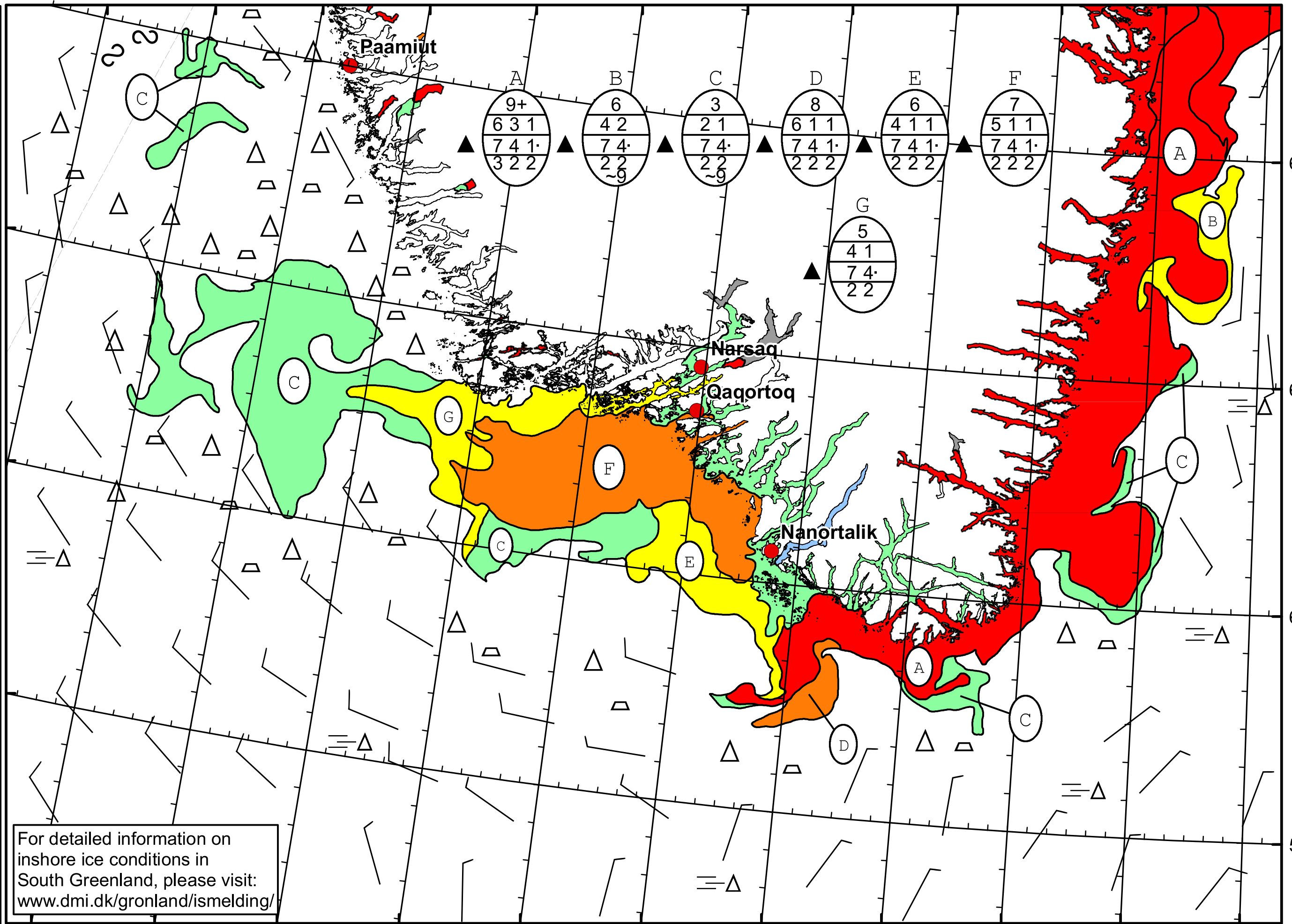



52°W 51°W 50°W 49°W 48°W 47°W 46°W 45°W 44°W 43°W 42°W 41°W





 DMI

 Ice Service

 Cape Farewell Ice Chart

 Danish Meteorological Institute

 Valid: 23 April 2023, 09:15 UTC

 Next Chart: 24 April 2023

For detailed information on inshore ice conditions in South Greenland, please visit: www.dmi.dk/gronland/ismelding/

