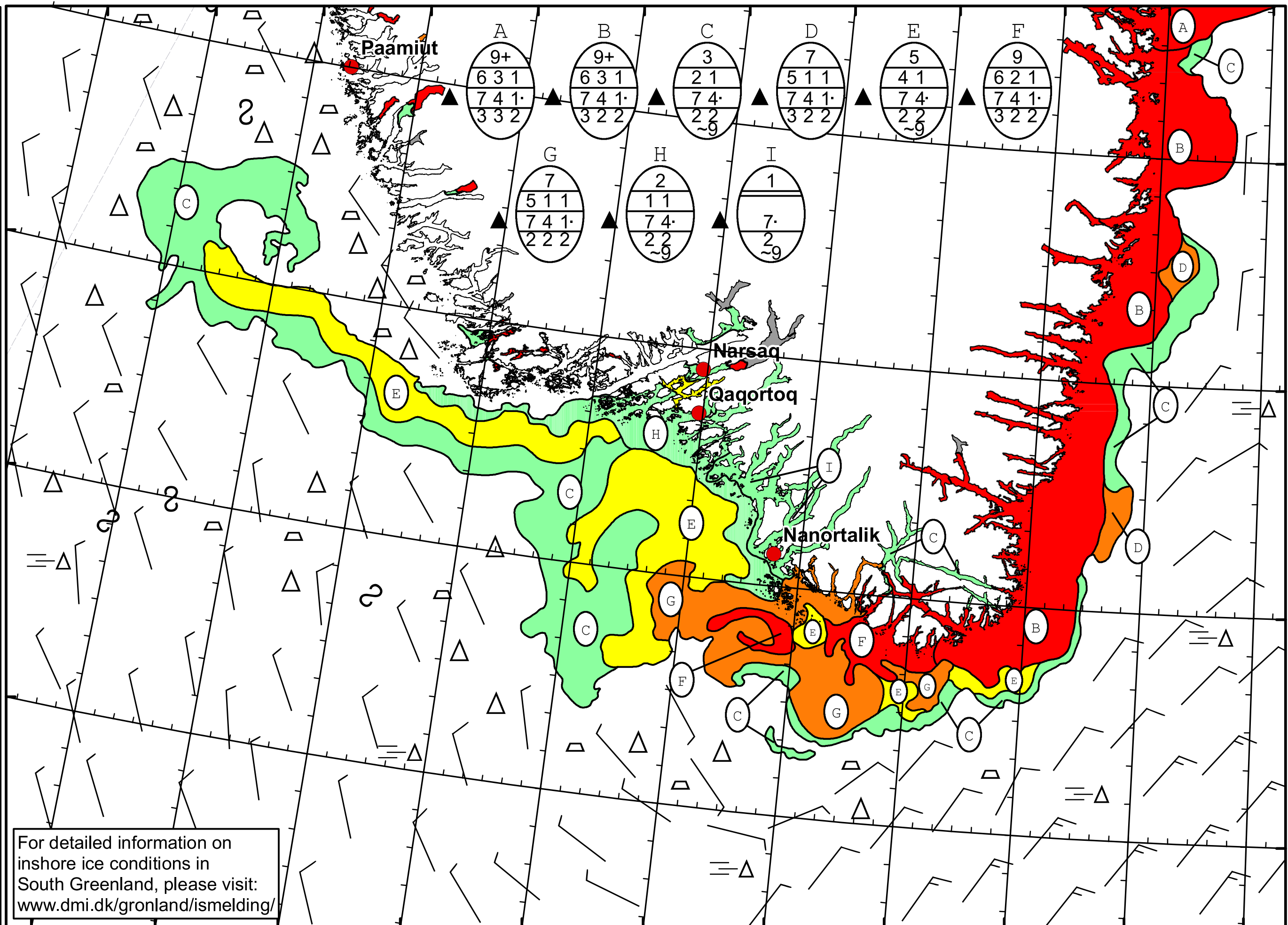



52°W 51°W 50°W 49°W 48°W 47°W 46°W 45°W 44°W 43°W 42°W 41°W



 **DMI**  
 Ice Service  
 Danish Meteorological Institute  
 Cape Farewell Ice Chart  
 Valid: 26 April 2023, 20:35 UTC  
 Next Chart: 28 April 2023

For detailed information on inshore ice conditions in South Greenland, please visit: [www.dmi.dk/gronland/ismelding/](http://www.dmi.dk/gronland/ismelding/)



51°W 50°W 49°W 48°W 47°W 46°W 45°W 44°W 43°W 42°W 41°W