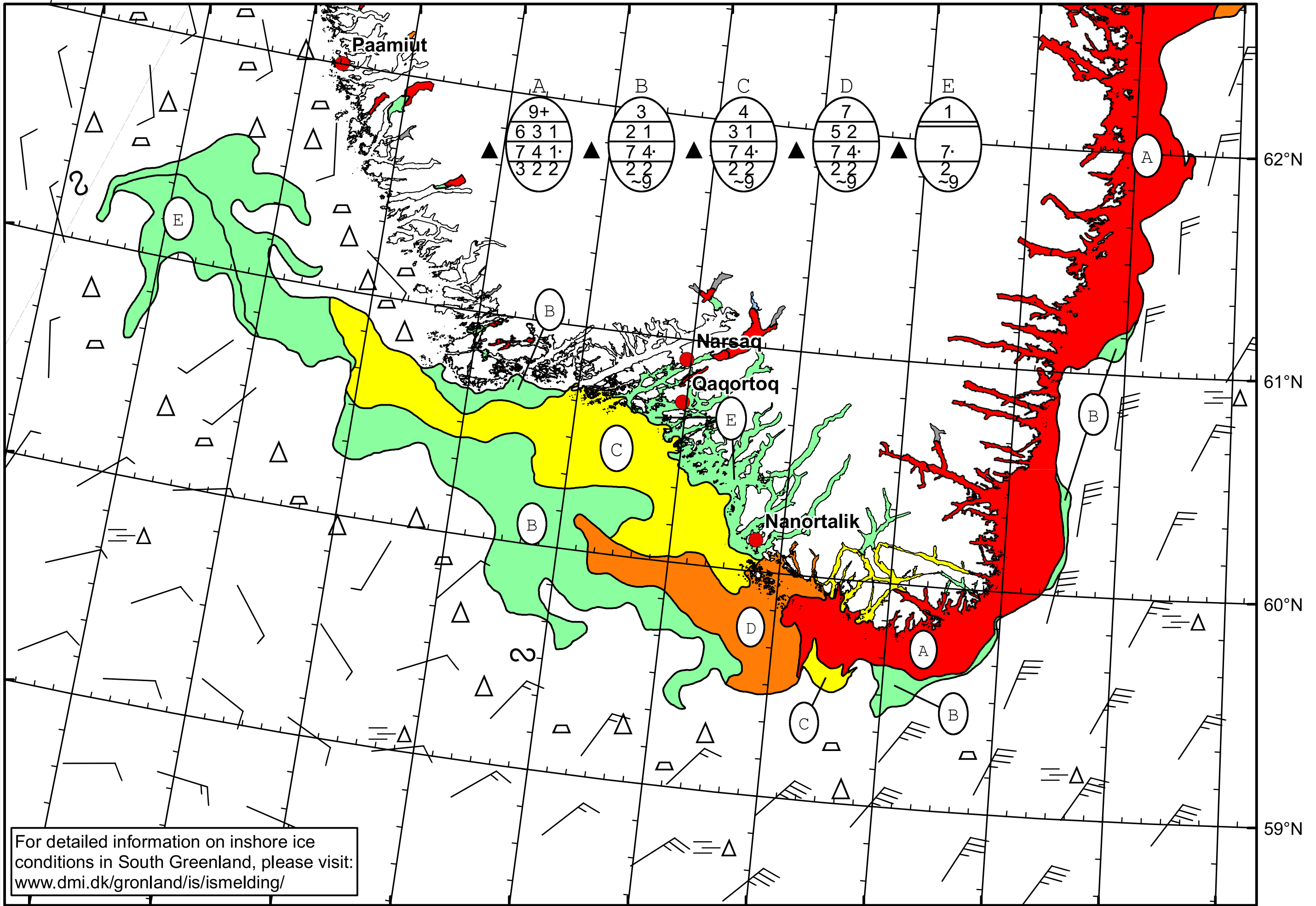



52°W 51°W 50°W 49°W 48°W 47°W 46°W 45°W 44°W 43°W 42°W 41°W



 **DMI**
 Ice Service
 Danish Meteorological Institute
 Cape Farewell Ice Chart
 Valid: 27 April 2023, 20:30 UTC
 Next Chart: 29 April 2023



For detailed information on inshore ice conditions in South Greenland, please visit: www.dmi.dk/gronland/is/ismelding/

51°W 50°W 49°W 48°W 47°W 46°W 45°W 44°W 43°W 42°W 41°W