


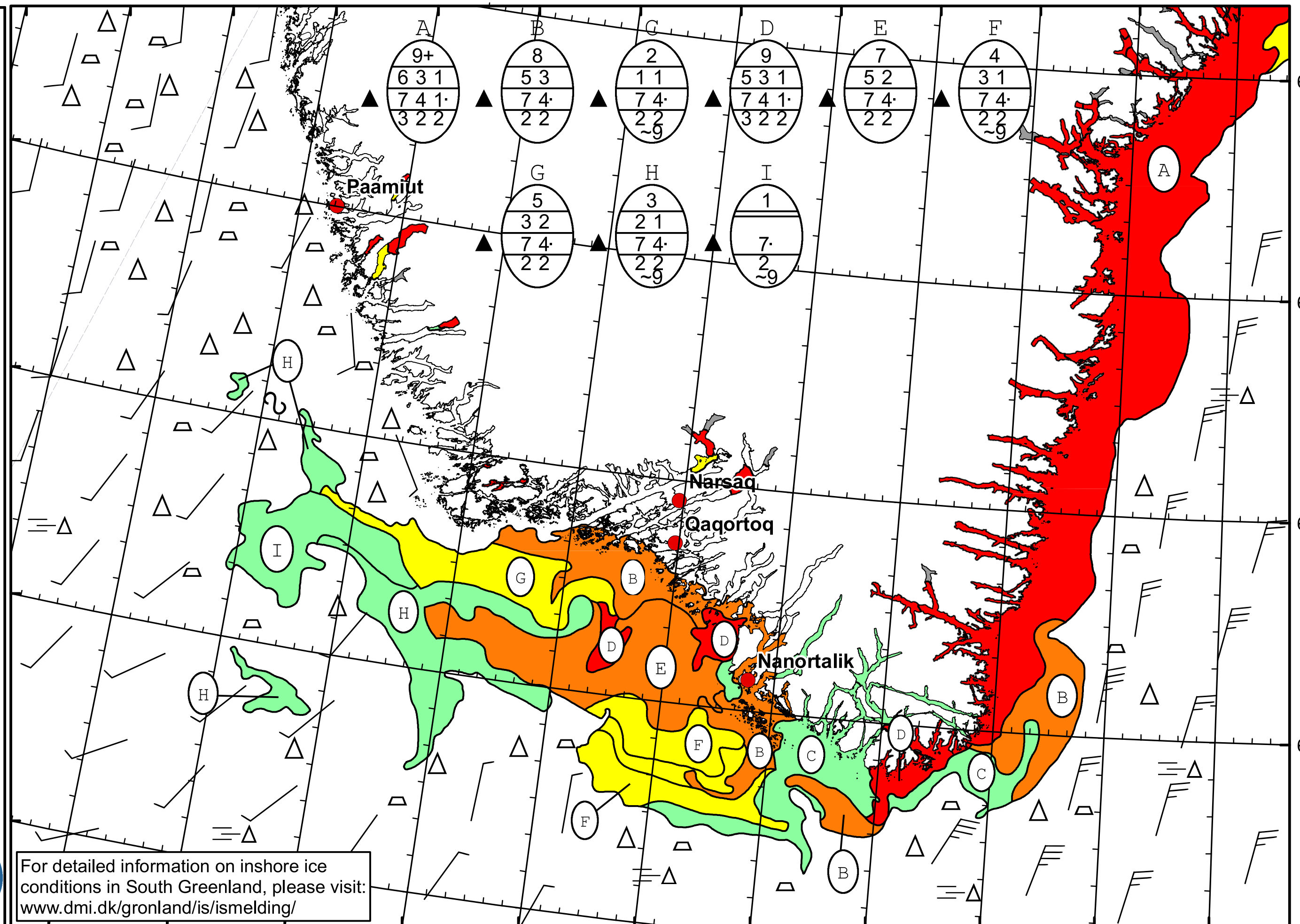


53°W 52°W 51°W 50°W 49°W 48°W 47°W 46°W 45°W 44°W 43°W 42°W 41°W

63°N  
62°N  
61°N  
60°N




  
 DMI  
 Ice Service  
 Danish Meteorological Institute  
 Cape Farewell Ice Chart  
 Valid: 06 May 2023, 20:55 UTC  
 Next Chart: 09 May 2023



For detailed information on inshore ice conditions in South Greenland, please visit: [www.dmi.dk/gronland/is/ismelding/](http://www.dmi.dk/gronland/is/ismelding/)

51°W 50°W 49°W 48°W 47°W 46°W 45°W 44°W 43°W 42°W 41°W