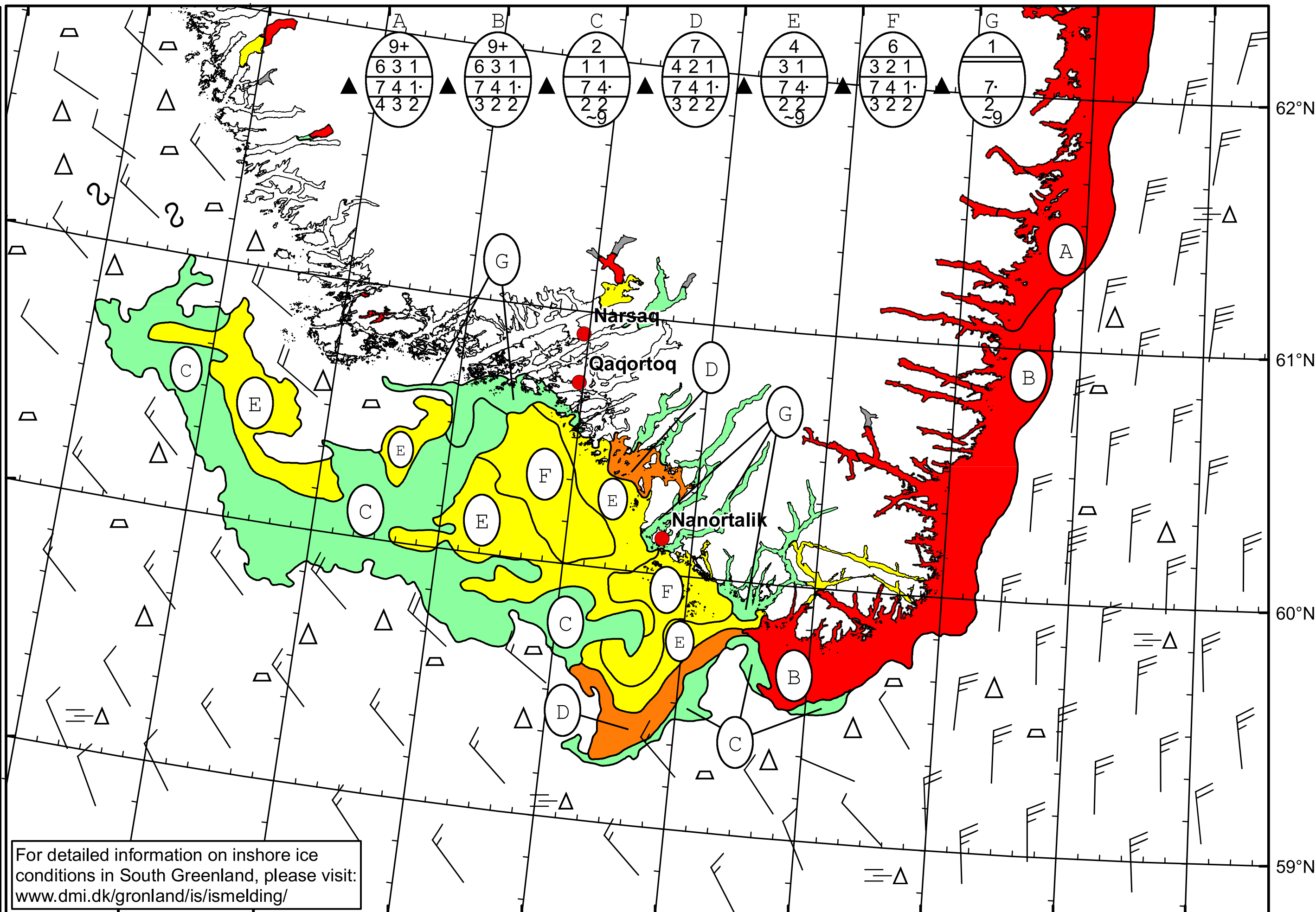




51°W 50°W 49°W 48°W 47°W 46°W 45°W 44°W 43°W 42°W 41°W



 DMI
 Ice Service
 Cape Farewell Ice Chart
 Danish Meteorological Institute
 Valid: 08 May 2023, 20:40 UTC
 Next Chart: 10 May 2023

For detailed information on inshore ice conditions in South Greenland, please visit: www.dmi.dk/gronland/is/ismelding/

