

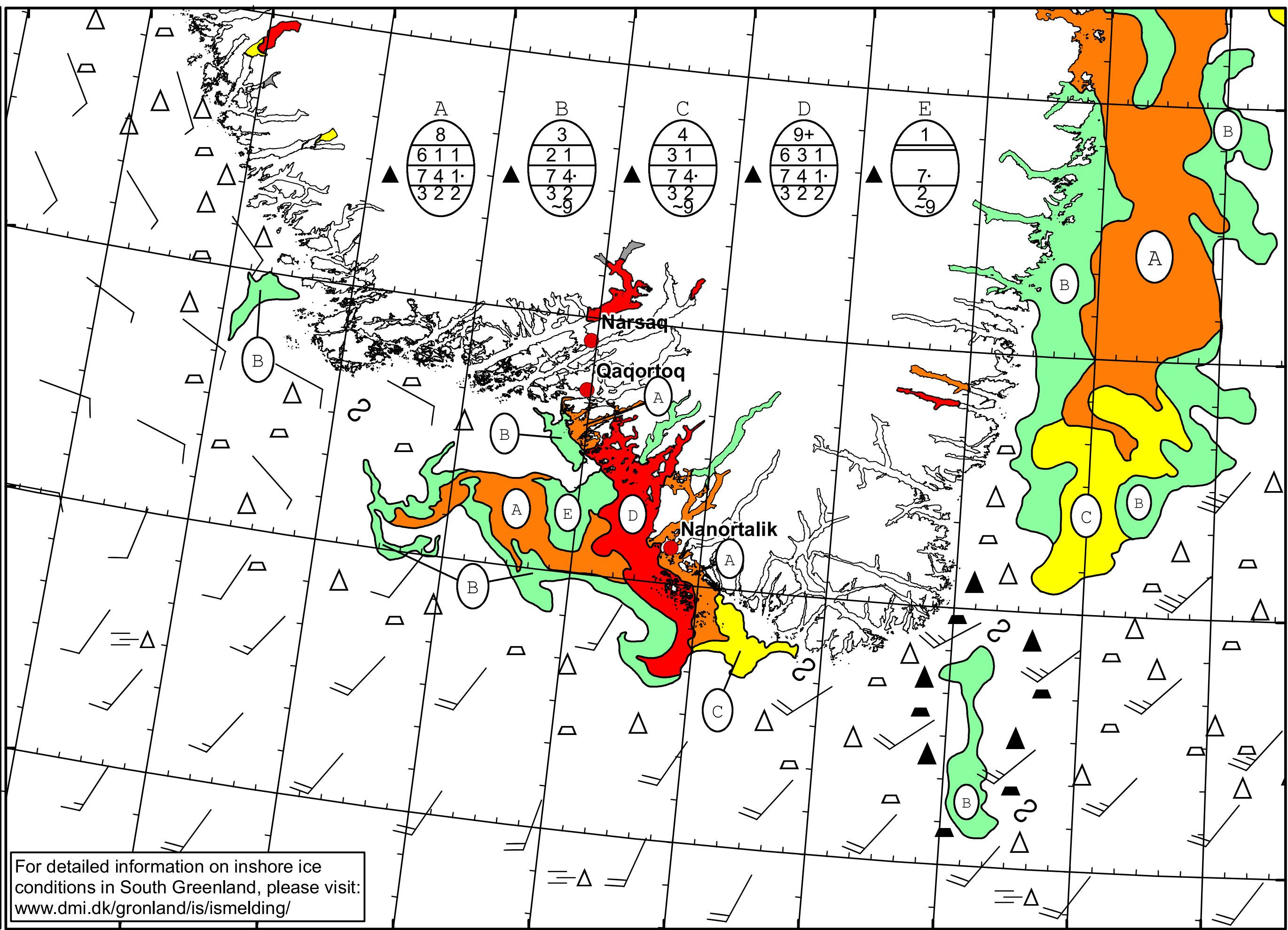
51°W 50°W 49°W 48°W 47°W 46°W 45°W 44°W 43°W 42°W 41°W

62°N

61°N

60°N

59°N



A

8
6 1 1
7 4 1
3 2 2

B

3
2 1
7 4
3 2
~9

C

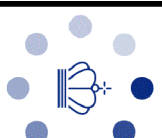
4
3 1
7 4
3 2
~9

D

9+
6 3 1
7 4 1
3 2 2

E

1
7
2
~9



DMI

Ice Service

Danish Meteorological Institute

Valid: 24 May 2023, 20:45 UTC
Next Chart: 26 May 2023



For detailed information on inshore ice conditions in South Greenland, please visit: www.dmi.dk/gronland/is/ismelding/

49°W 48°W 47°W 46°W 45°W 44°W 43°W 42°W 41°W