


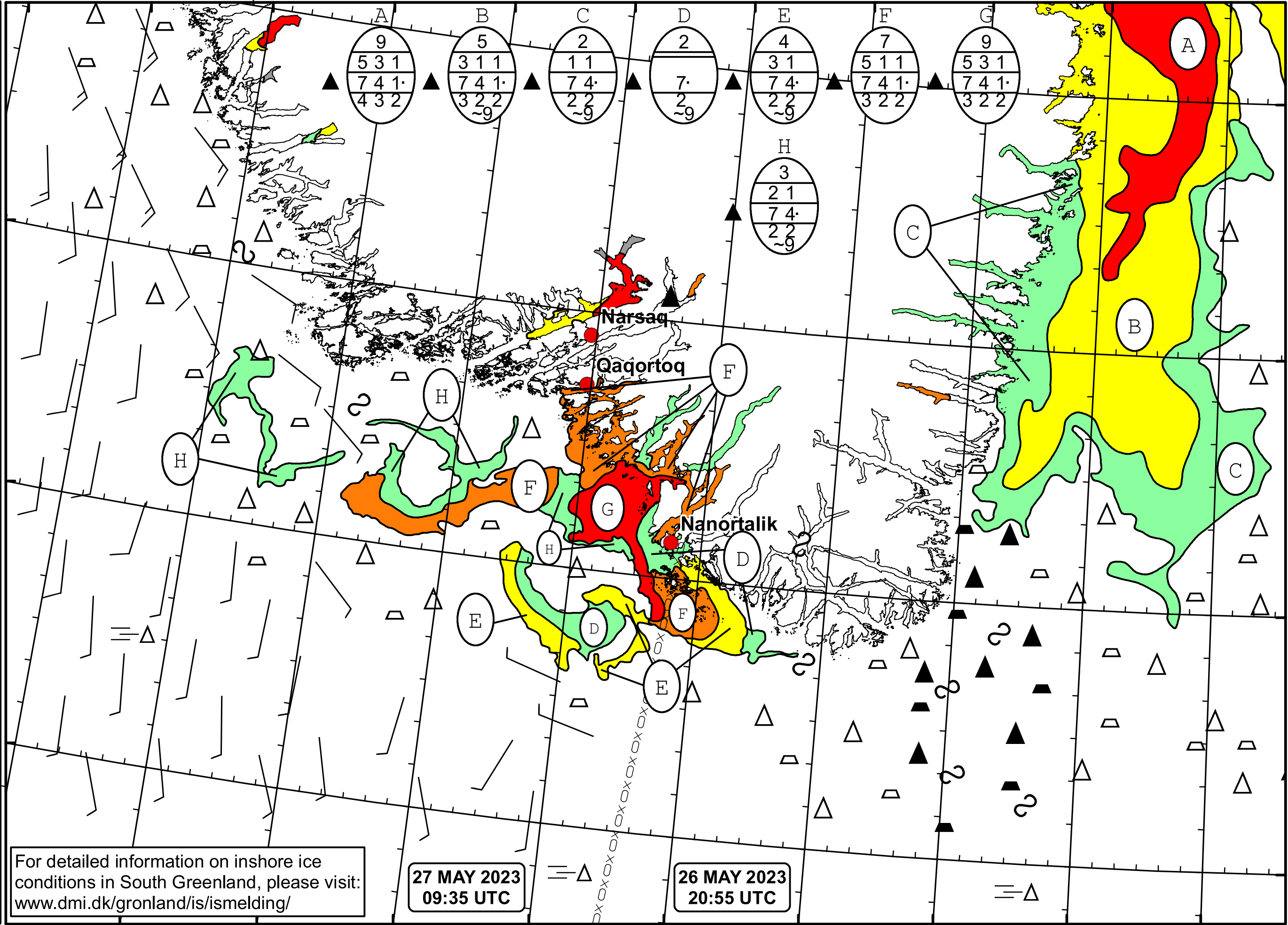


51°W 50°W 49°W 48°W 47°W 46°W 45°W 44°W 43°W 42°W 41°W


  
 DMI
   

  
 Ice Service
   
 Danish Meteorological Institute
   
 Cape Farewell Ice Chart
   
 Valid: 27 May 2023, 09:35 UTC
   
 Next Chart: 28 May 2023
   




62°N  
61°N  
60°N  
59°N

For detailed information on inshore ice conditions in South Greenland, please visit: [www.dmi.dk/gronland/is/ismelding/](http://www.dmi.dk/gronland/is/ismelding/)

27 MAY 2023  
09:35 UTC

26 MAY 2023  
20:55 UTC

49°W 48°W 47°W 46°W 45°W 44°W 43°W 42°W 41°W