

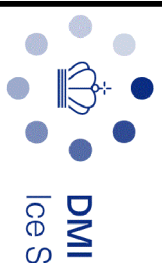
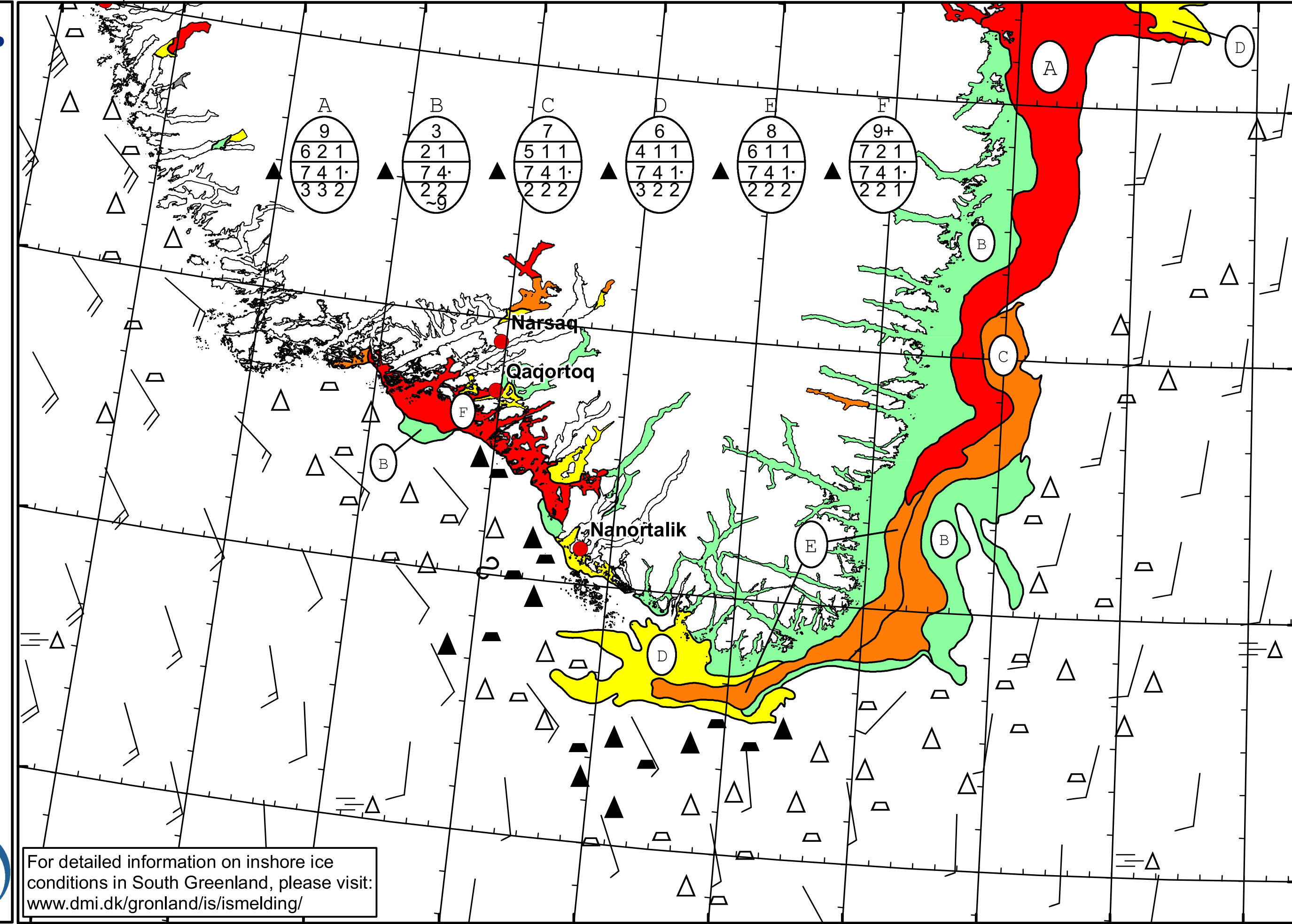
50°W 49°W 48°W 47°W 46°W 45°W 44°W 43°W 42°W 41°W 40°W

62°N

61°N

60°N

59°N



DMI
Ice Service
Danish Meteorological Institute
Cape Farewell Ice Chart
Valid: 31 May 2023, 20:40 UTC
Next Chart: 03 June 2023



For detailed information on inshore ice conditions in South Greenland, please visit:
www.dmi.dk/gronland/is/ismelding/

49°W 48°W 47°W 46°W 45°W 44°W 43°W 42°W 41°W 40°W