

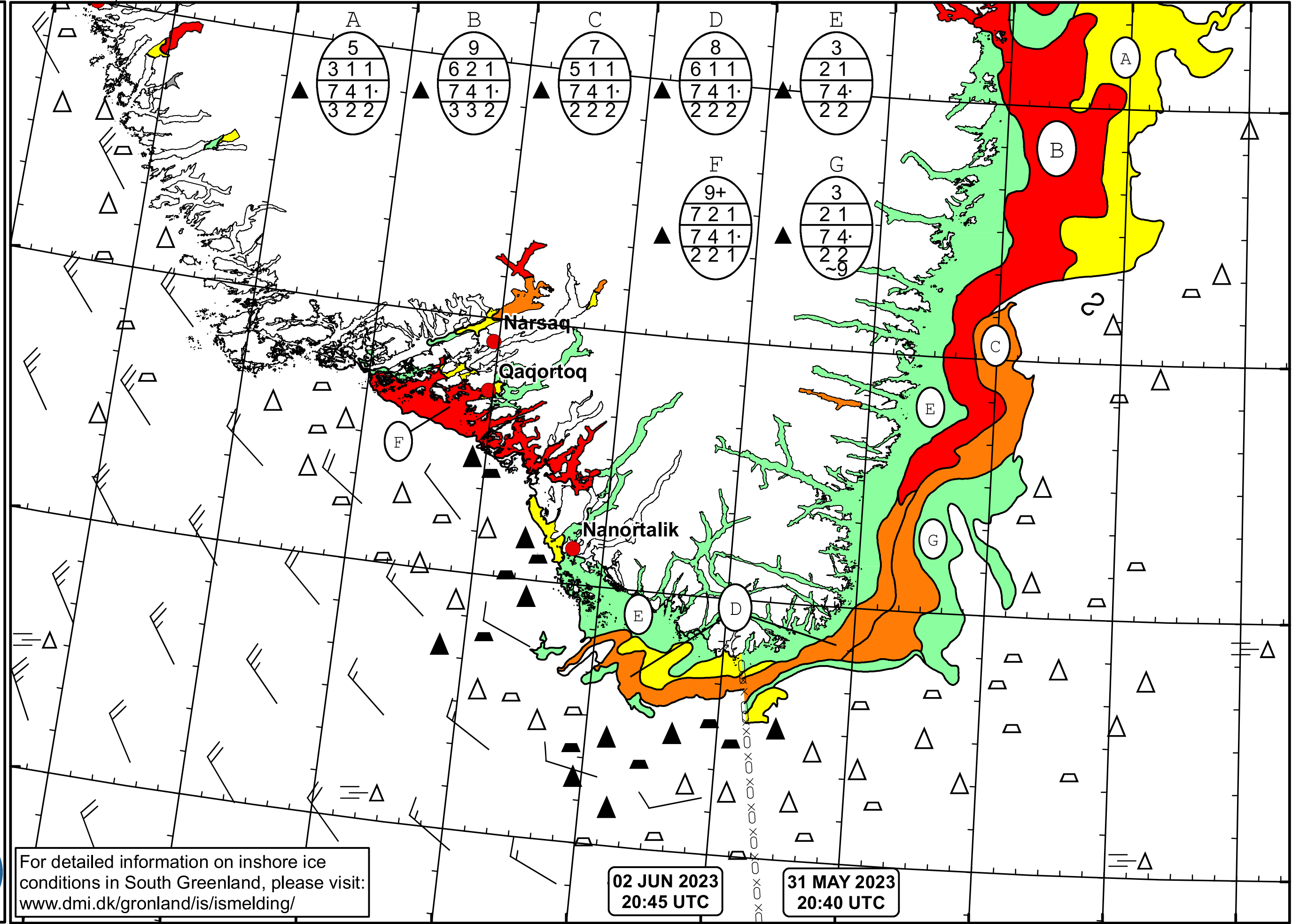


50°W 49°W 48°W 47°W 46°W 45°W 44°W 43°W 42°W 41°W 40°W


  
 DMI
   

  
 Ice Service
   
 Cape Farewell Ice Chart
   
 Danish Meteorological Institute
   
 Valid: 02 June 2023, 20:45 UTC
   
 Next Chart: 04 June 2023



For detailed information on inshore ice conditions in South Greenland, please visit: [www.dmi.dk/gronland/is/ismelding/](http://www.dmi.dk/gronland/is/ismelding/)

02 JUN 2023  
20:45 UTC

31 MAY 2023  
20:40 UTC

49°W 48°W 47°W 46°W 45°W 44°W 43°W 42°W 41°W 40°W

62°N  
61°N  
60°N  
59°N