

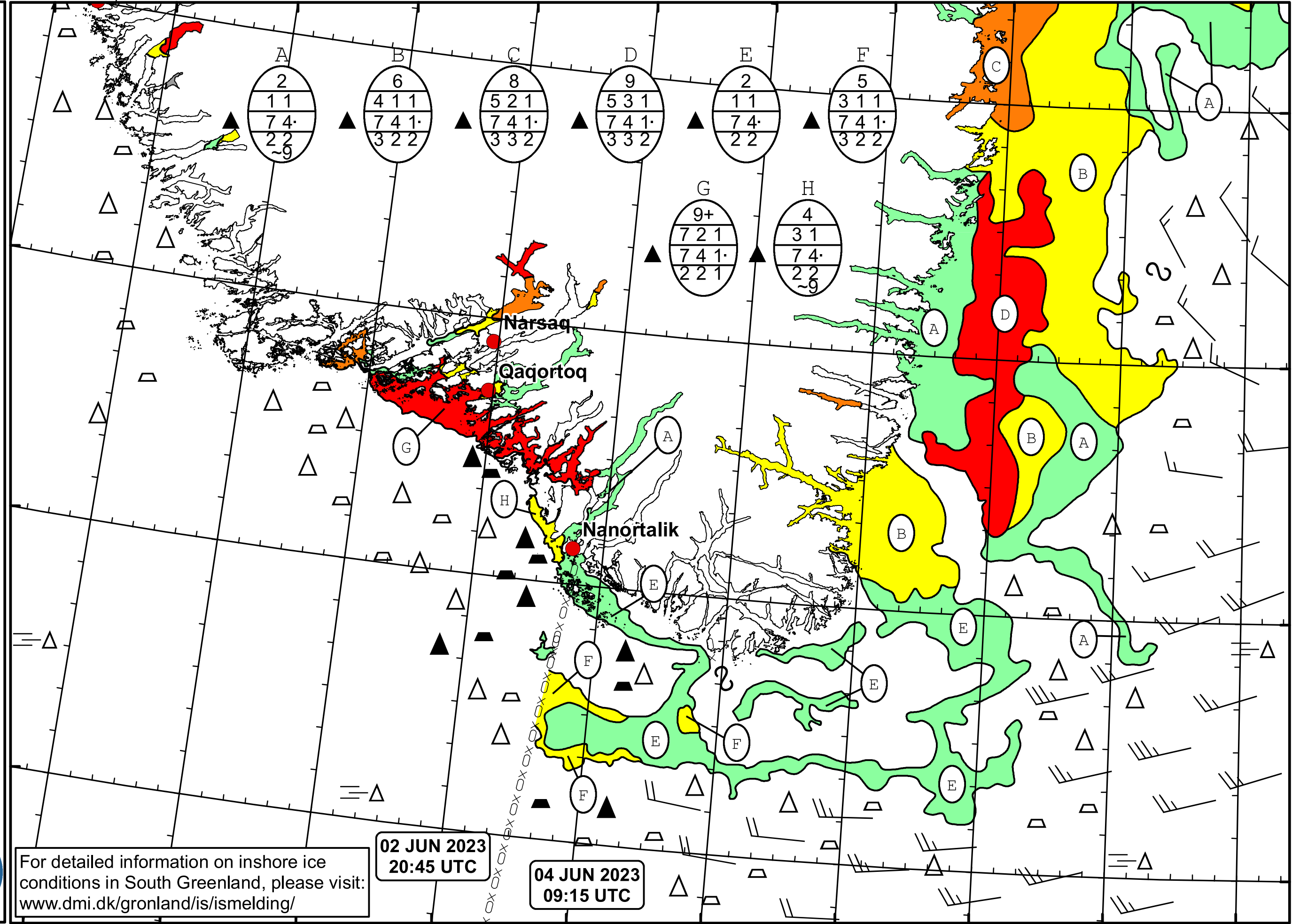


50°W 49°W 48°W 47°W 46°W 45°W 44°W 43°W 42°W 41°W 40°W

 **DMI**  
 Ice Service  
**Danish Meteorological Institute**  
**Cape Farewell Ice Chart**  
 Valid: 04 June 2023, 09:15 UTC  
 Next Chart: 05 June 2023  




For detailed information on inshore ice conditions in South Greenland, please visit: [www.dmi.dk/gronland/is/ismelding/](http://www.dmi.dk/gronland/is/ismelding/)

02 JUN 2023  
20:45 UTC

04 JUN 2023  
09:15 UTC

49°W 48°W 47°W 46°W 45°W 44°W 43°W 42°W 41°W 40°W

62°N  
61°N  
60°N  
59°N