

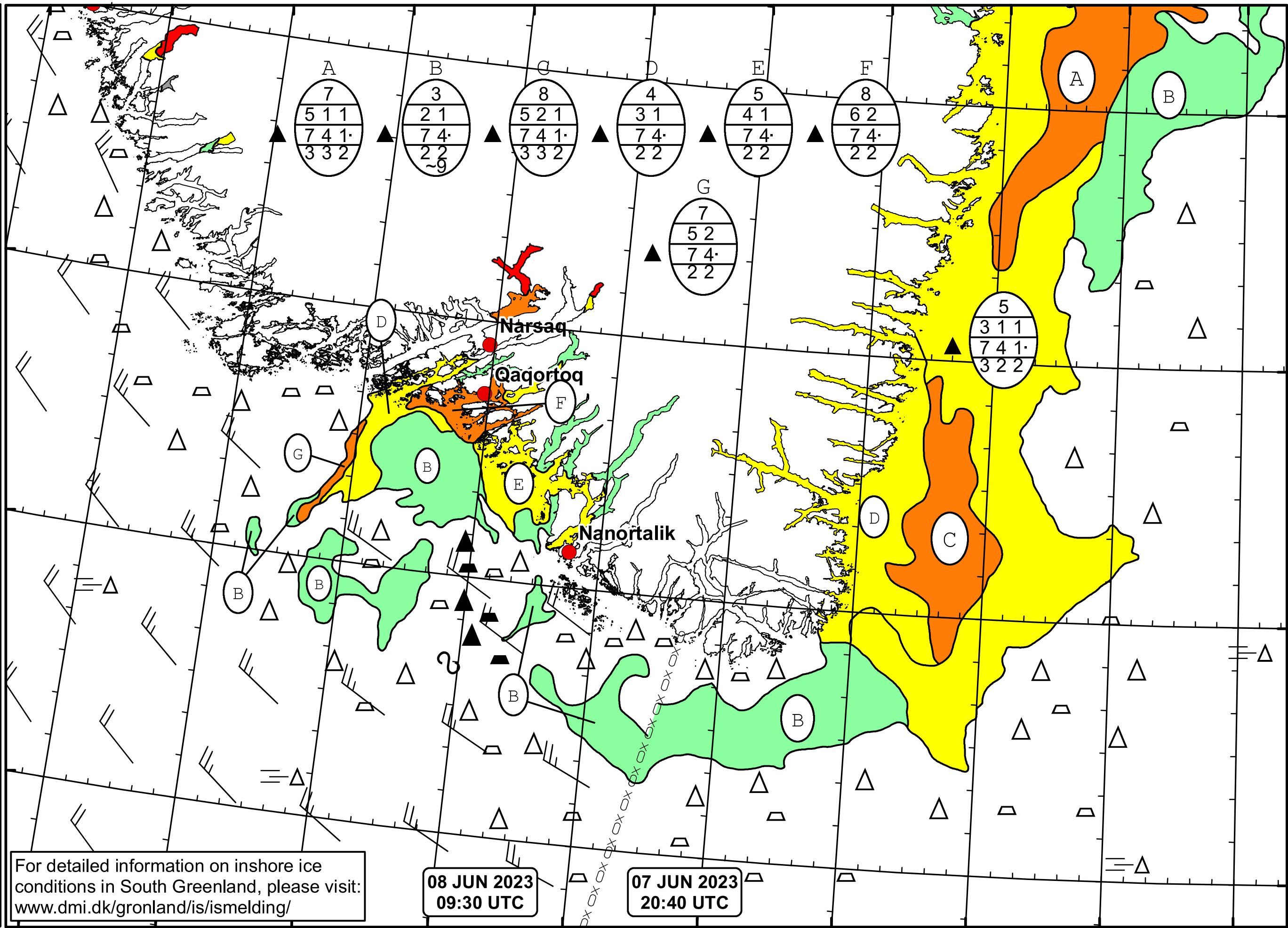
50°W 49°W 48°W 47°W 46°W 45°W 44°W 43°W 42°W 41°W 40°W

62°N

61°N

60°N

59°N



DMI

Ice Service

Danish Meteorological Institute

Valid: 08 June 2023, 09:15 UTC  
Next Chart: 10 June 2023



For detailed information on inshore ice conditions in South Greenland, please visit: [www.dmi.dk/gronland/is/ismelding/](http://www.dmi.dk/gronland/is/ismelding/)

08 JUN 2023  
09:30 UTC

07 JUN 2023  
20:40 UTC

49°W 48°W 47°W 46°W 45°W 44°W 43°W 42°W 41°W 40°W