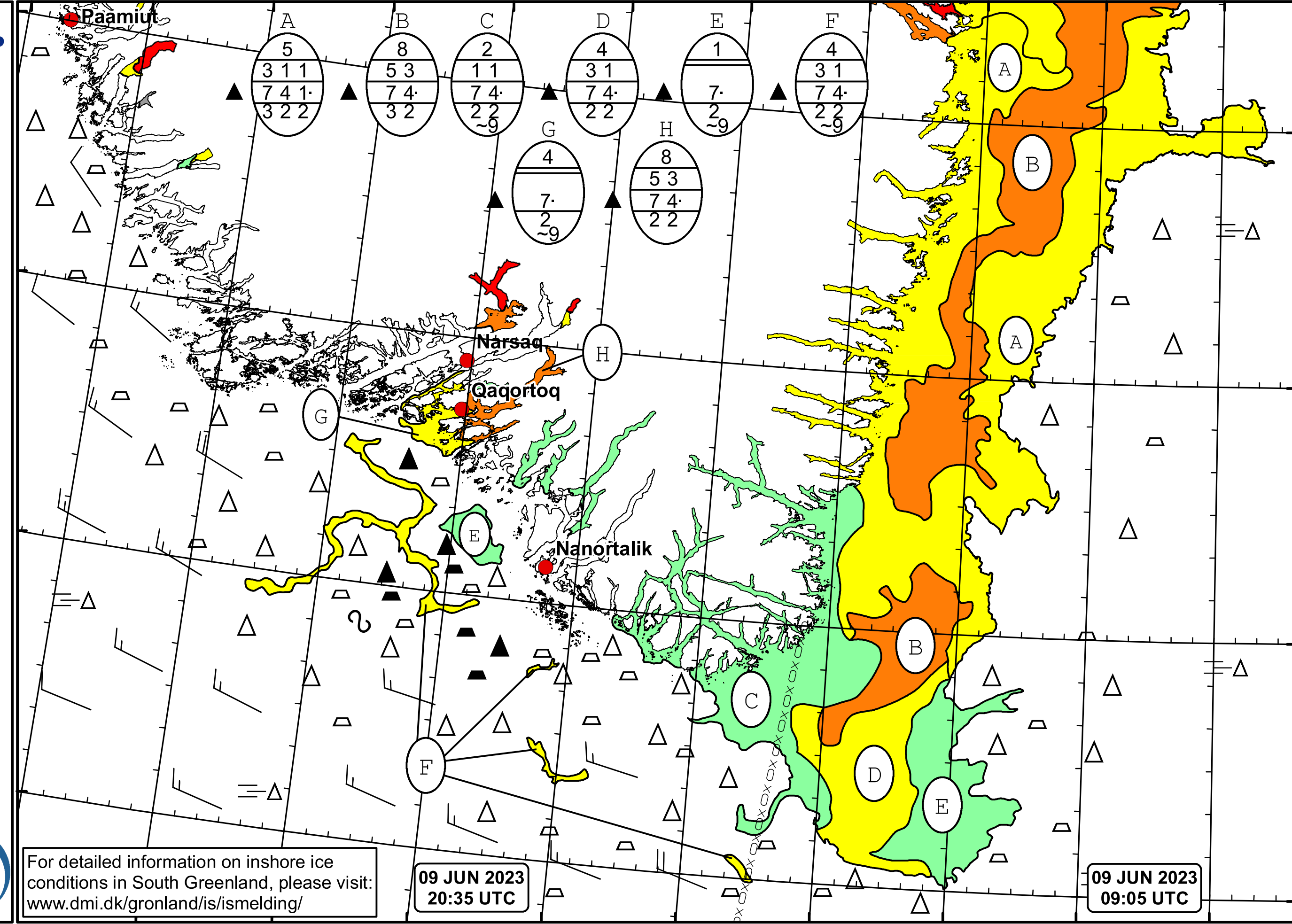



50°W 49°W 48°W 47°W 46°W 45°W 44°W 43°W 42°W 41°W 40°W





 DMI

 Ice Service

 Danish Meteorological Institute

 Cape Farewell Ice Chart

 Valid: 09 June 2023, 20:35 UTC

 Next Chart: 11 June 2023

For detailed information on inshore ice conditions in South Greenland, please visit: www.dmi.dk/gronland/is/ismelding/

09 JUN 2023
20:35 UTC

09 JUN 2023
09:05 UTC

48°W 47°W 46°W 45°W 44°W 43°W 42°W 41°W 40°W

62°N
61°N
60°N
59°N