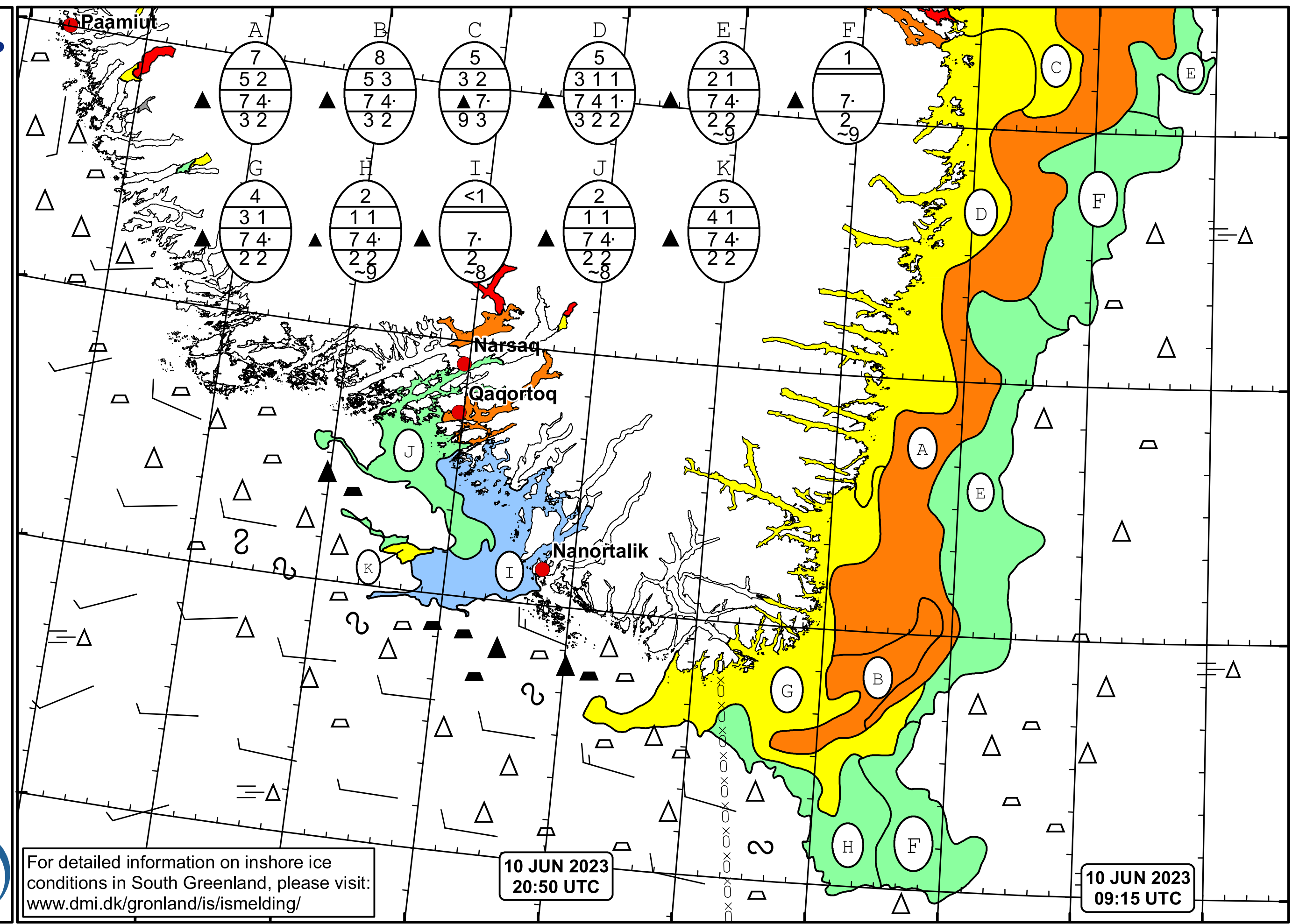


50°W 49°W 48°W 47°W 46°W 45°W 44°W 43°W 42°W 41°W 40°W



DMI
Ice Service
Cape Farewell Ice Chart
Danish Meteorological Institute
Valid: 10 June 2023, 20:50 UTC
Next Chart: 12 June 2023

For detailed information on inshore ice conditions in South Greenland, please visit: www.dmi.dk/gronland/is/ismelding/

10 JUN 2023
20:50 UTC

10 JUN 2023
09:15 UTC

