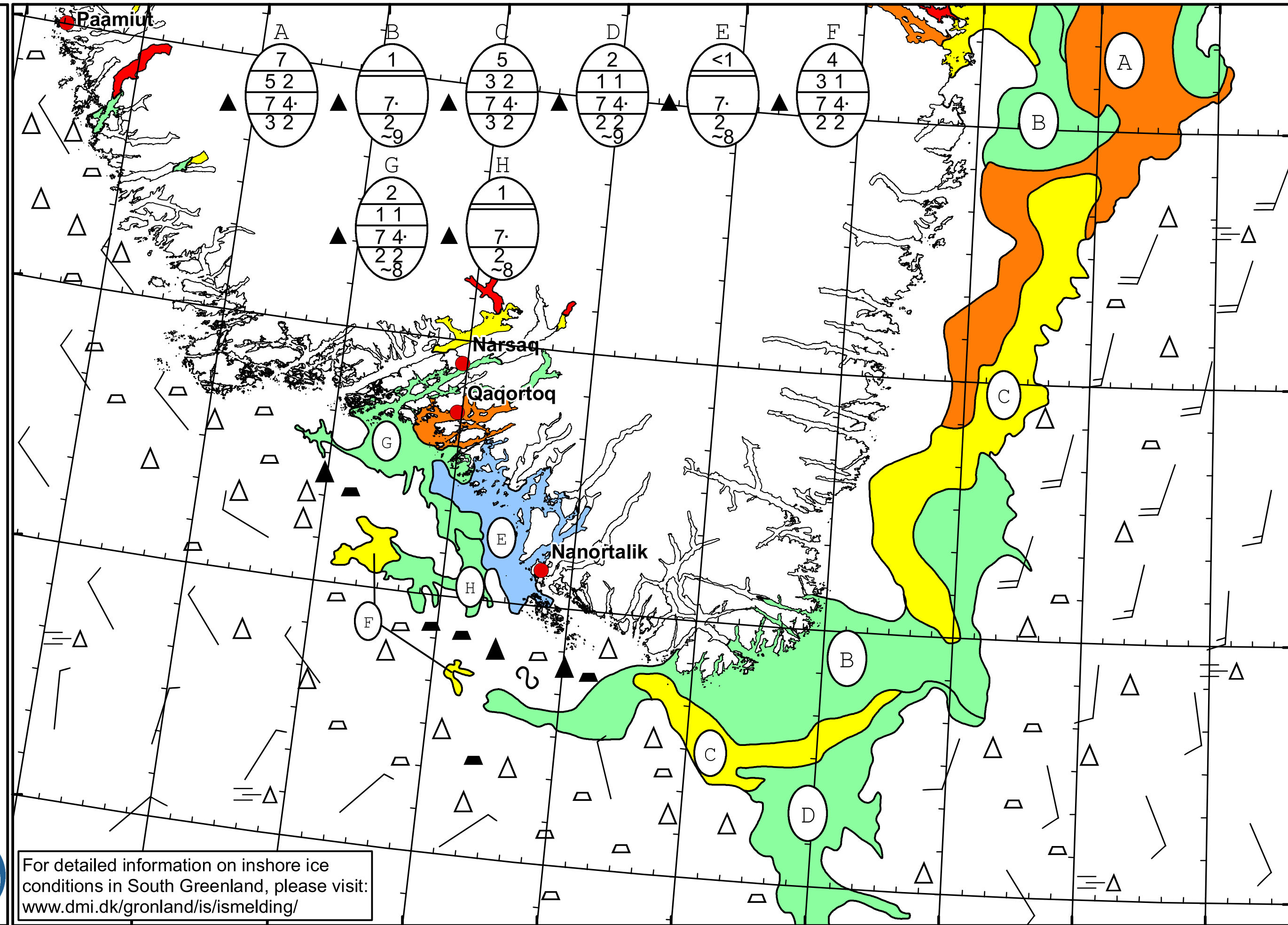


50°W 49°W 48°W 47°W 46°W 45°W 44°W 43°W 42°W 41°W 40°W



Cape Farewell Ice Chart  
 Danish Meteorological Institute

Valid: 11 June 2023, 20:55 UTC  
 Next Chart: 14 June 2023



For detailed information on inshore ice conditions in South Greenland, please visit:  
[www.dmi.dk/gronland/is/ismelding/](http://www.dmi.dk/gronland/is/ismelding/)

48°W 47°W 46°W 45°W 44°W 43°W 42°W 41°W 40°W

62°N  
 61°N  
 60°N  
 59°N