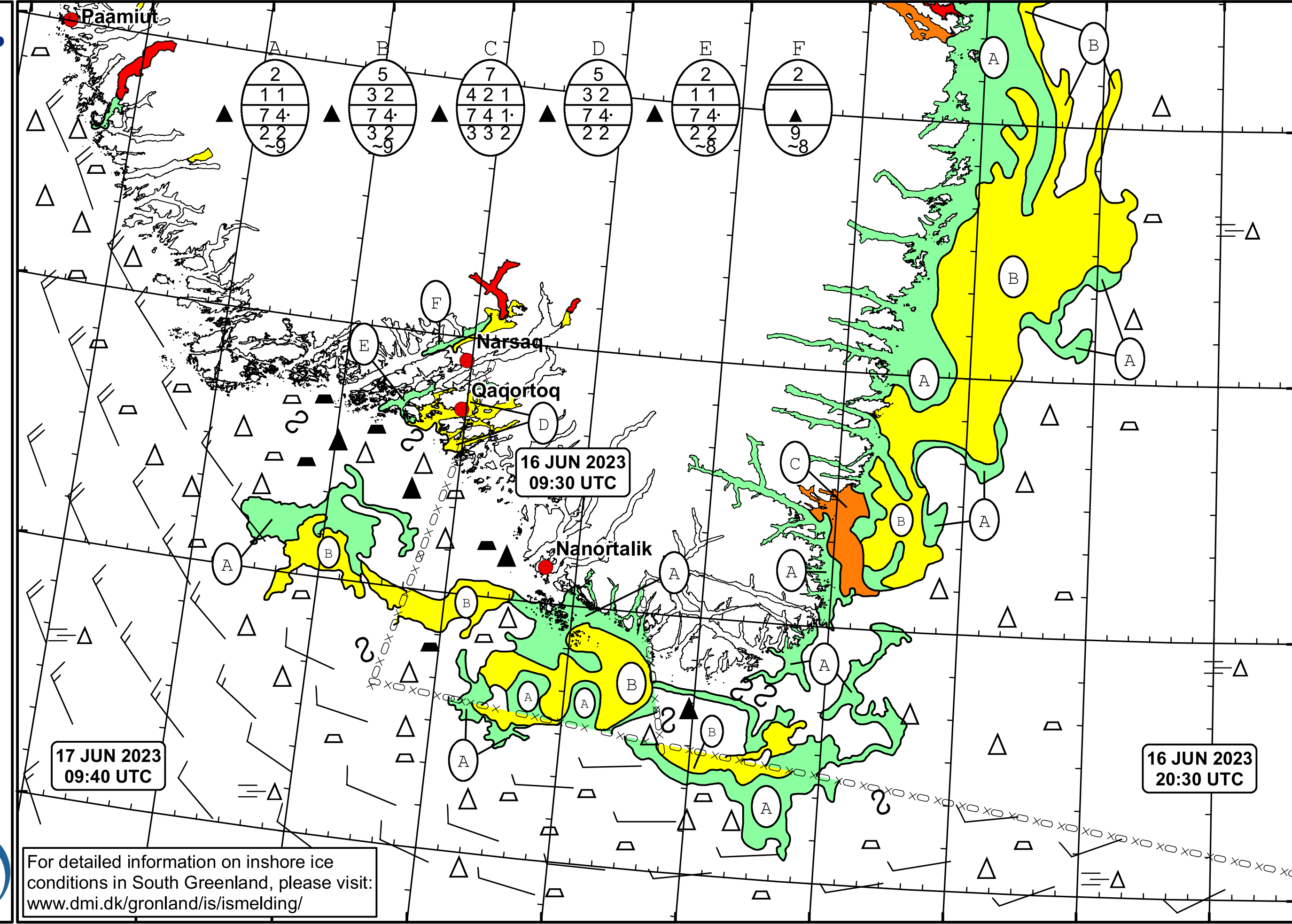




50°W 49°W 48°W 47°W 46°W 45°W 44°W 43°W 42°W 41°W 40°W



 **DMI**
 Ice Service
 Danish Meteorological Institute
Cape Farewell Ice Chart
 Valid: 17 June 2023, 09:40 UTC
 Next Chart: 18 June 2023

For detailed information on inshore ice conditions in South Greenland, please visit:
www.dmi.dk/gronland/is/ismelding/

48°W 47°W 46°W 45°W 44°W 43°W 42°W 41°W 40°W

62°N
61°N
60°N
59°N