



51°W 50°W 49°W 48°W 47°W 46°W 45°W 44°W 43°W 42°W 41°W



 DMI



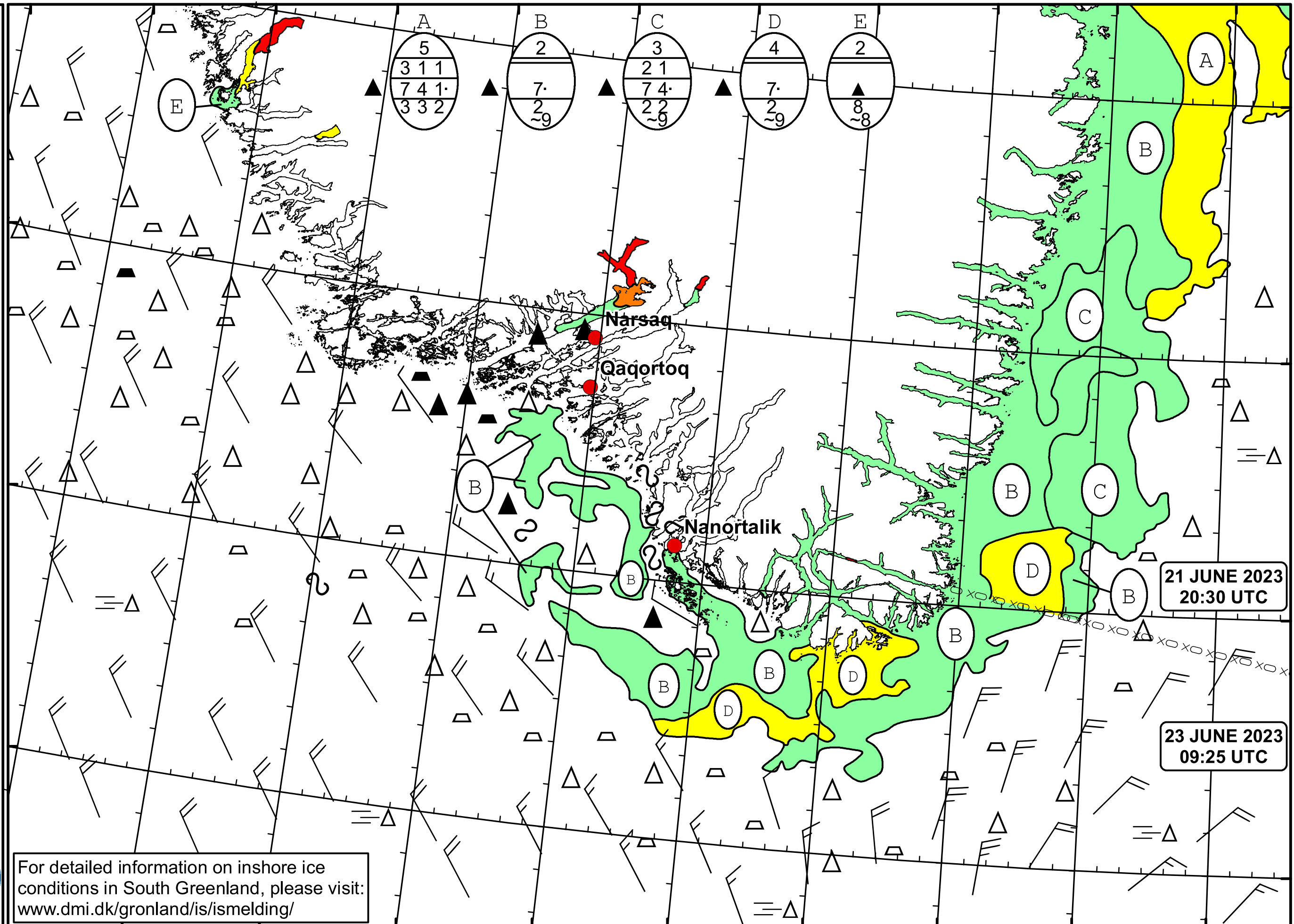
 Ice Service

 Cape Farewell Ice Chart

 Danish Meteorological Institute

 Valid: 23 June 2023, 09:25 UTC

 Next Chart: 25 June 2023



For detailed information on inshore ice conditions in South Greenland, please visit: www.dmi.dk/gronland/is/ismelding/



49°W 48°W 47°W 46°W 45°W 44°W 43°W 42°W 41°W

62°N
61°N
60°N
59°N

21 JUNE 2023
20:30 UTC

23 JUNE 2023
09:25 UTC