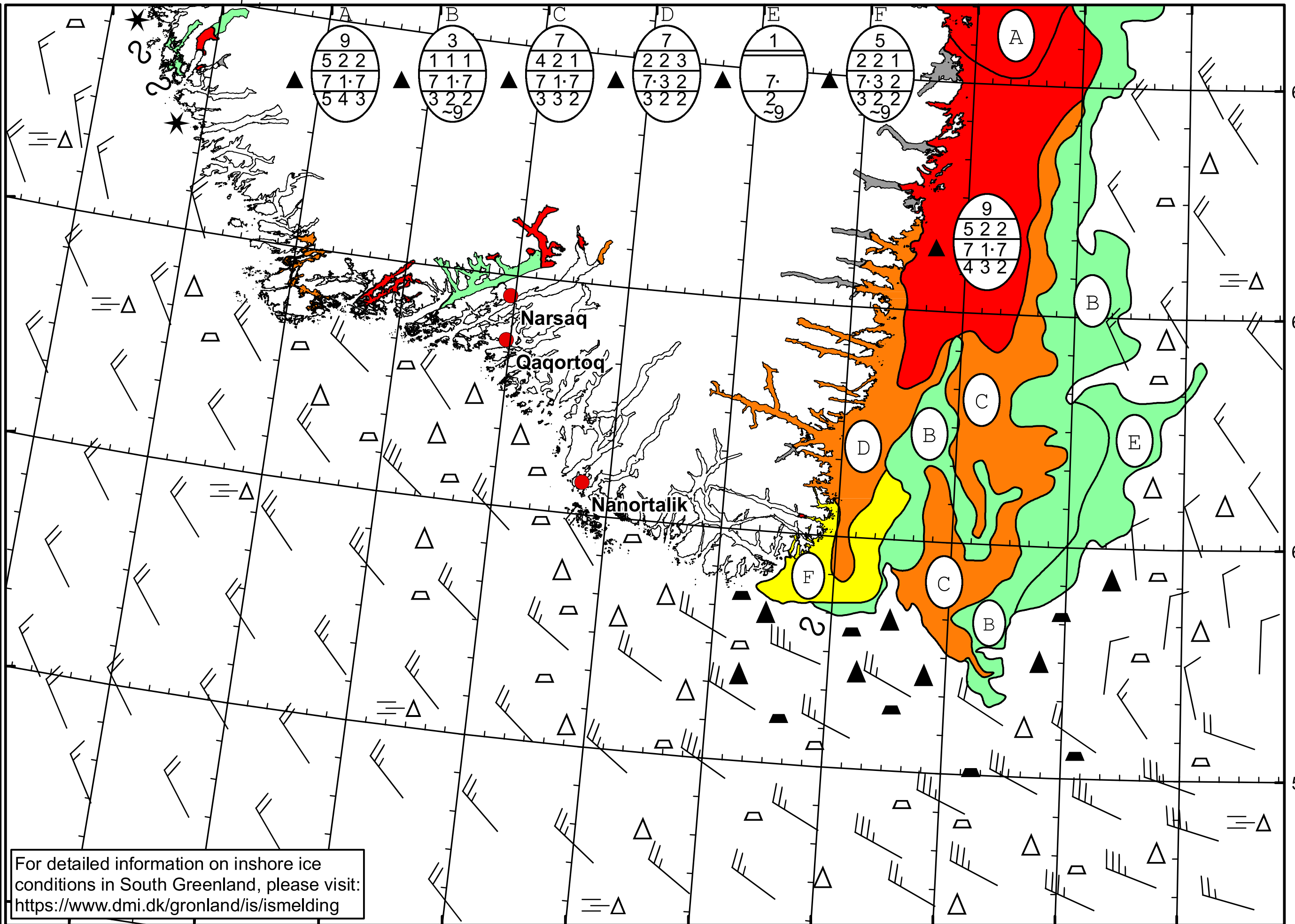



50°W 49°W 48°W 47°W 46°W 45°W 44°W 43°W 42°W 41°W 40°W



 **DMI**  
 Ice Service  
 Danish Meteorological Institute  
 Cape Farewell Ice Chart  
 Valid: 04 February 2024, 20:40 UTC  
 Next Chart: 07 February 2024

For detailed information on inshore ice conditions in South Greenland, please visit: <https://www.dmi.dk/gronland/is/ismelding>

49°W 48°W 47°W 46°W 45°W 44°W 43°W 42°W 41°W 40°W