
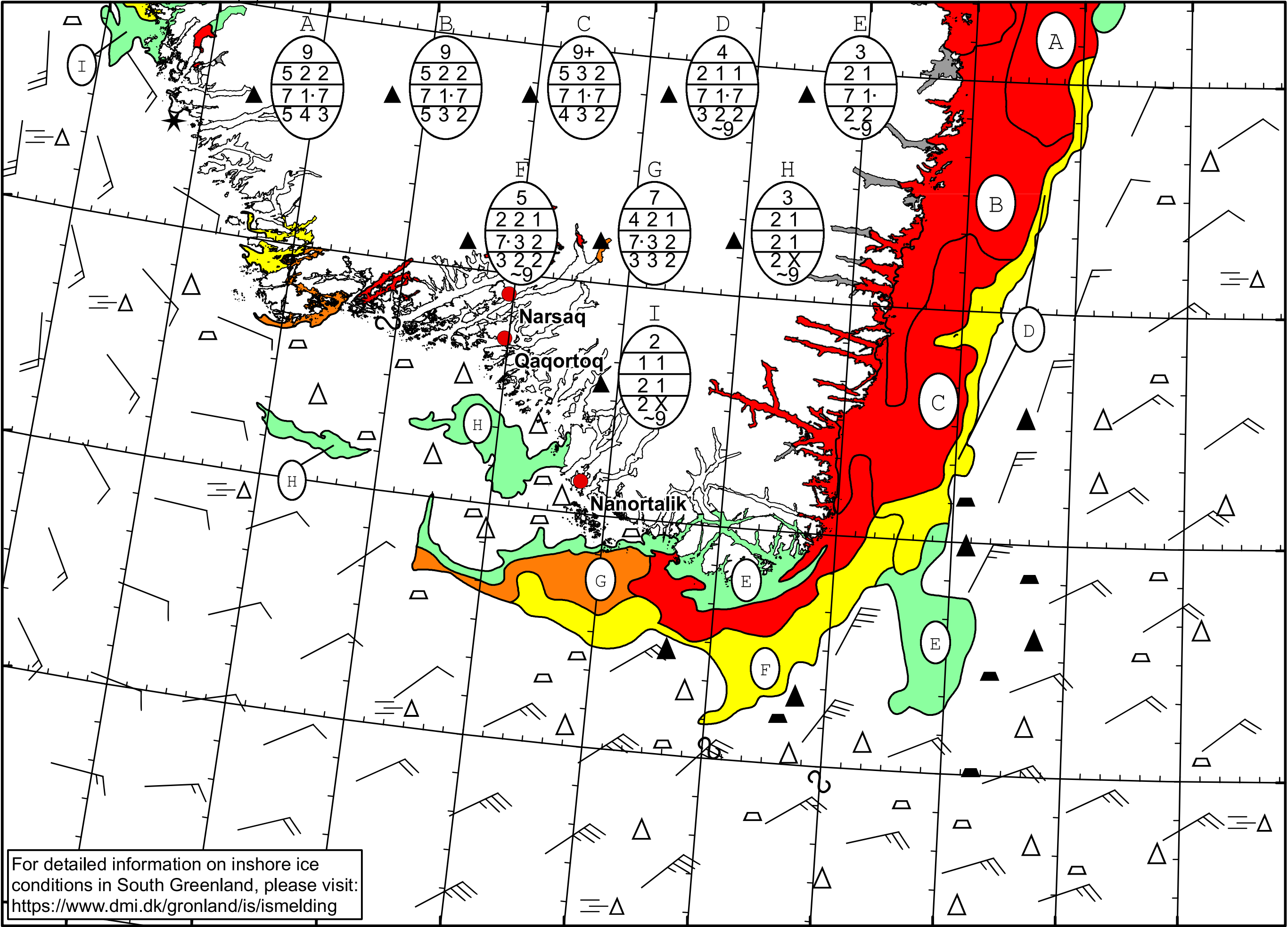


50°W 49°W 48°W 47°W 46°W 45°W 44°W 43°W 42°W 41°W 40°W

62°N
61°N
60°N
59°N

 **DMI**
 Ice Service
Danish Meteorological Institute
 Cape Farewell Ice Chart
 Valid: 07 February 2024, 09:45 UTC
 Next Chart: 08 February 2024



For detailed information on inshore ice conditions in South Greenland, please visit:
<https://www.dmi.dk/gronland/is/ismelding>

49°W 48°W 47°W 46°W 45°W 44°W 43°W 42°W 41°W 40°W