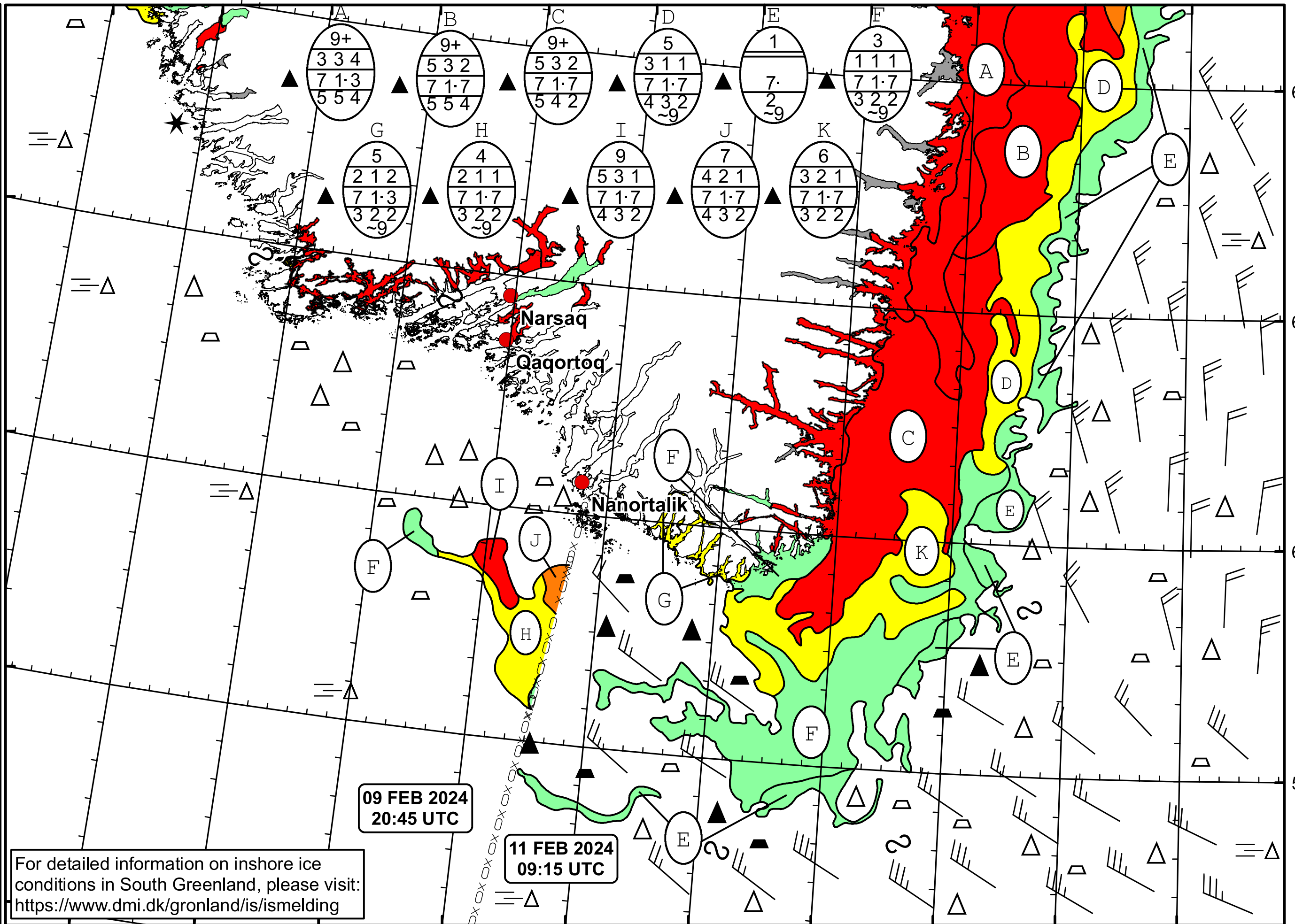




50°W 49°W 48°W 47°W 46°W 45°W 44°W 43°W 42°W 41°W 40°W



62°N
61°N
60°N
59°N

 **DMI**
 Ice Service
Cape Farewell Ice Chart
 Danish Meteorological Institute
 Valid: 11 February 2024, 09:15 UTC
 Next Chart: 13 February 2024


For detailed information on inshore ice conditions in South Greenland, please visit:
<https://www.dmi.dk/gronland/is/ismelding>

09 FEB 2024
20:45 UTC

11 FEB 2024
09:15 UTC

49°W 48°W 47°W 46°W 45°W 44°W 43°W 42°W 41°W 40°W