
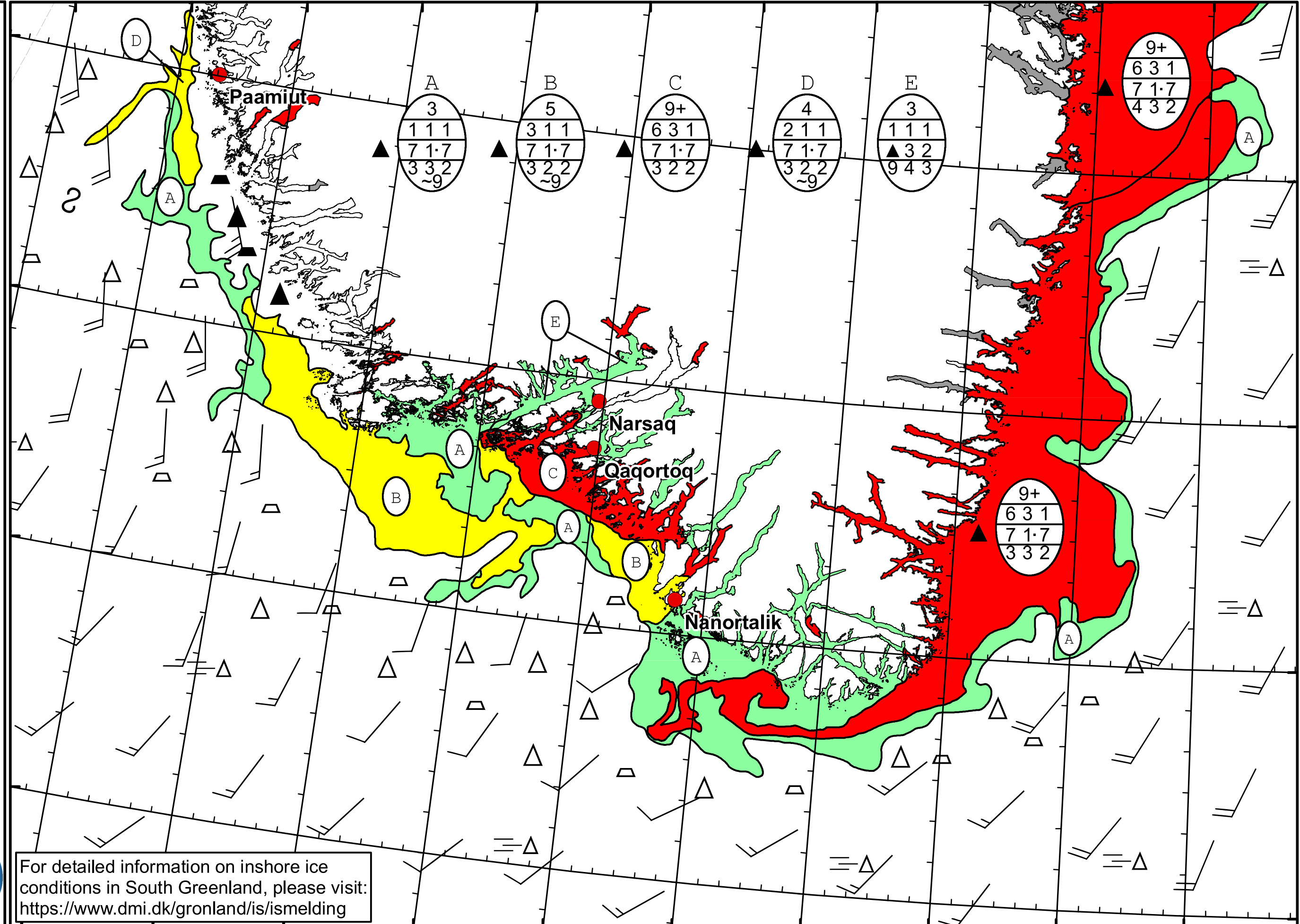


51°W 50°W 49°W 48°W 47°W 46°W 45°W 44°W 43°W 42°W 41°W

 **DMI**  
 Ice Service  
 Danish Meteorological Institute  
 Cape Farewell Ice Chart  
 Valid: 02 March 2024, 20:30 UTC  
 Next Chart: 05 March 2024



For detailed information on inshore ice conditions in South Greenland, please visit: <https://www.dmi.dk/gronland/is/ismelding>

50°W 49°W 48°W 47°W 46°W 45°W 44°W 43°W 42°W 41°W

62°N 61°N 60°N 59°N