

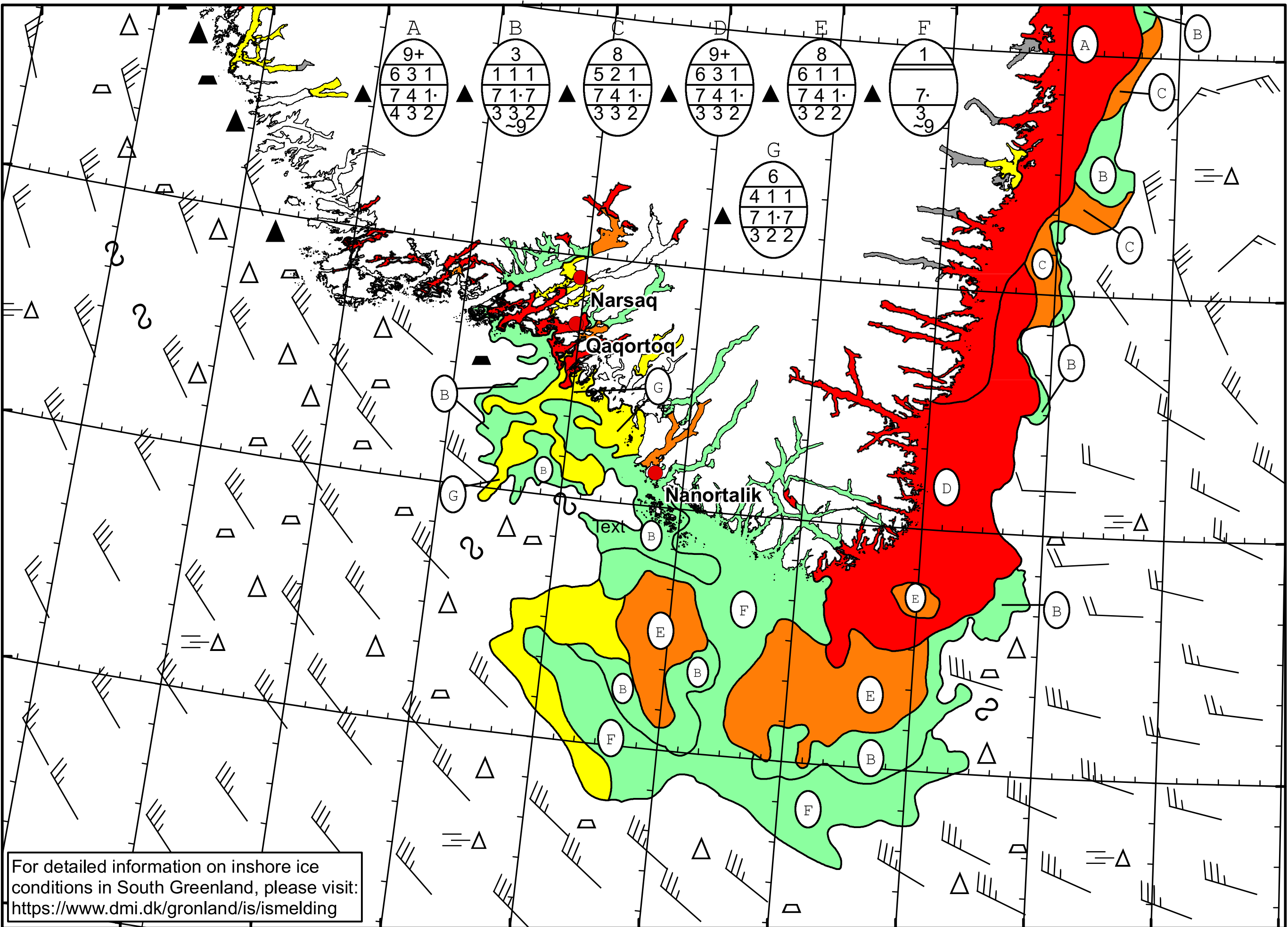
51°W 50°W 49°W 48°W 47°W 46°W 45°W 44°W 43°W 42°W 41°W

62°N

61°N

60°N

59°N



A

9+
6 3 1
7 4 1
4 3 2

B

3
1 1 1
7 1 7
3 3 2

C

8
5 2 1
7 4 1
3 3 2

D

9+
6 3 1
7 4 1
3 3 2

E

8
6 1 1
7 4 1
3 2 2

F

1
7
3
~9

G

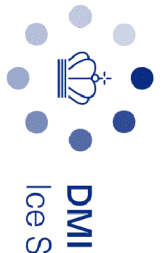
6
4 1 1
7 1 7
3 2 2

Narsaq

Qaqortoq

Nanortalik

text



DMI

Ice Service

Cape Farewell Ice Chart

Danish Meteorological Institute

Valid: 09 March 2024, 20:55 UTC

Next Chart: 12 March 2024



For detailed information on inshore ice conditions in South Greenland, please visit:
<https://www.dmi.dk/gronland/is/ismelding>

49°W 48°W 47°W 46°W 45°W 44°W 43°W 42°W 41°W 40°W