

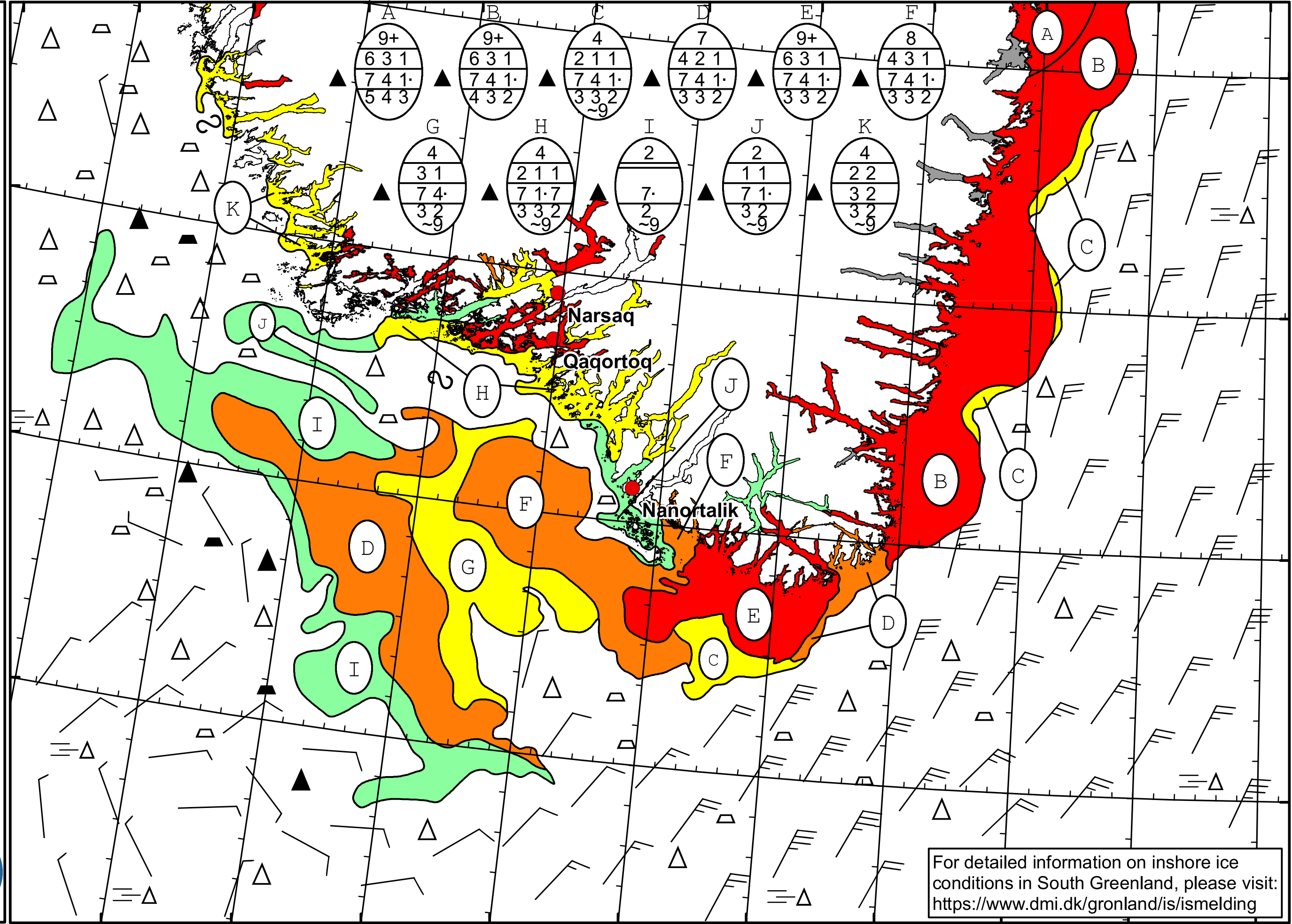


51°W 50°W 49°W 48°W 47°W 46°W 45°W 44°W 43°W 42°W 41°W 40°W

62°N  
61°N  
60°N  
59°N



**DMI**  
 Ice Service  
**Cape Farewell Ice Chart**  
 Danish Meteorological Institute  
 Valid: 16 March 2024, 20:45 UTC  
 Next Chart: 19 March 2024



For detailed information on inshore ice conditions in South Greenland, please visit: <https://www.dmi.dk/gronland/is/ismelding>

49°W 48°W 47°W 46°W 45°W 44°W 43°W 42°W 41°W 40°W