

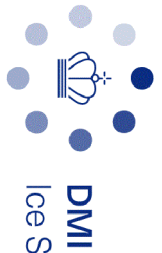
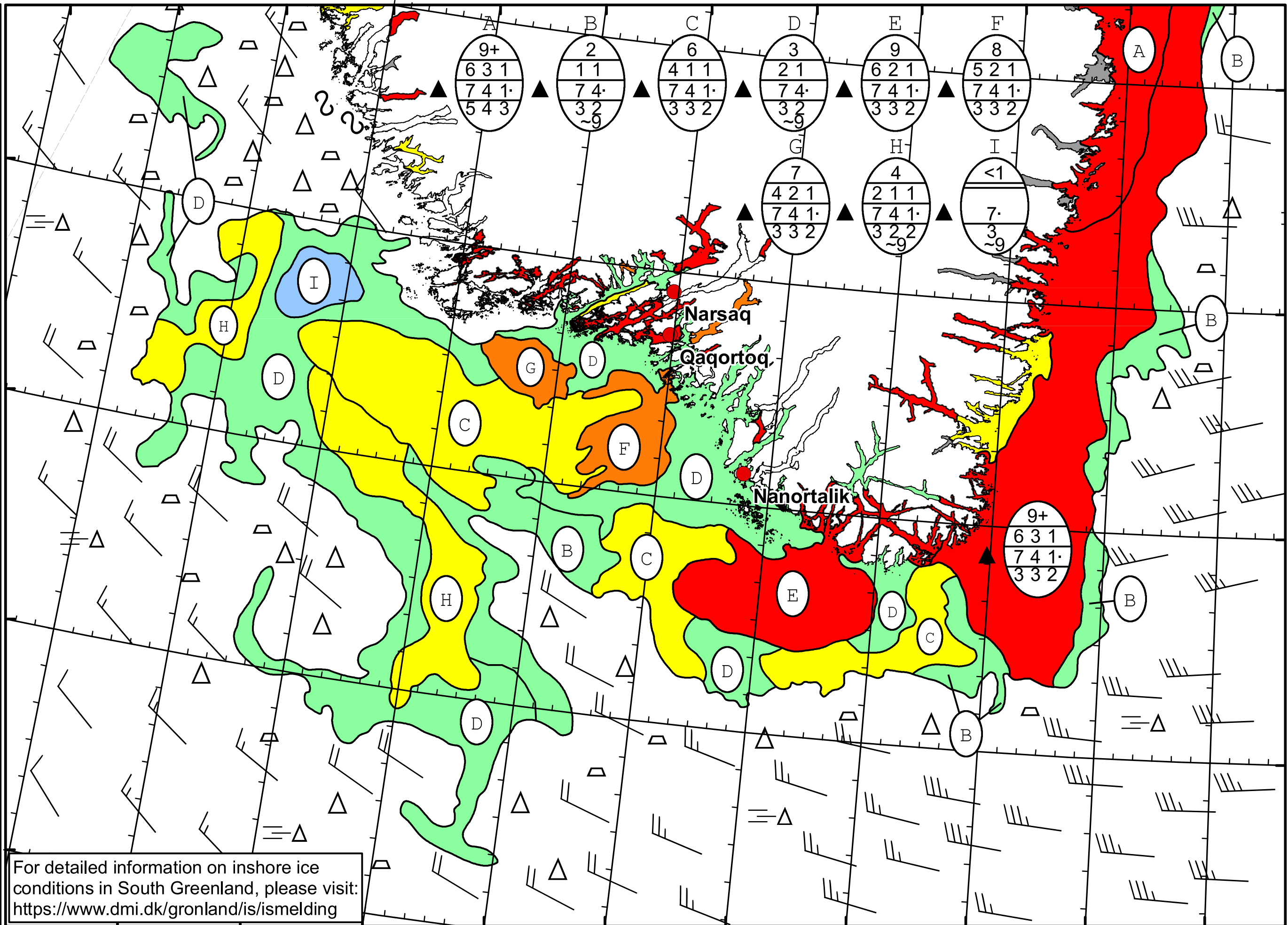
52°W 51°W 50°W 49°W 48°W 47°W 46°W 45°W 44°W 43°W 42°W 41°W

62°N

61°N

60°N

59°N



DMII
Ice Service
Cape Farewell Ice Chart
Danish Meteorological Institute
Valid: 21 March 2024, 20:45 UTC
Next Chart: 24 March 2024



For detailed information on inshore ice conditions in South Greenland, please visit:
<https://www.dmi.dk/gronland/is/ismelding>

50°W 49°W 48°W 47°W 46°W 45°W 44°W 43°W 42°W 41°W