

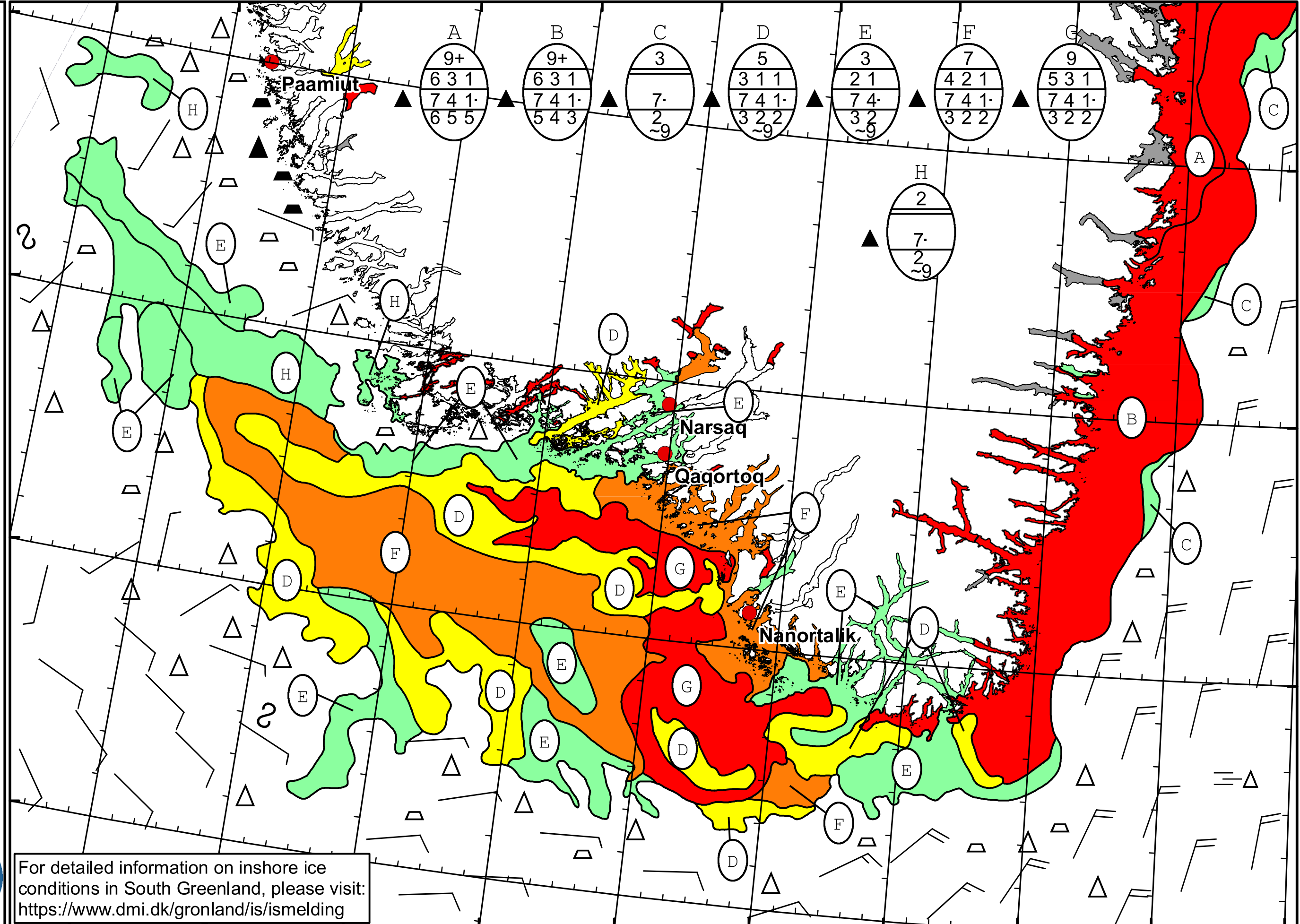


51°W 50°W 49°W 48°W 47°W 46°W 45°W 44°W 43°W 42°W


  
 DMI
   

  
 Ice Service
   
 Danish Meteorological Institute
   
 Cape Farewell Ice Chart
   
 Valid: 30 March 2024, 09:20 UTC
   
 Next Chart: 01 April 2024



For detailed information on inshore ice conditions in South Greenland, please visit: <https://www.dmi.dk/gronland/is/ismelding>

50°W 49°W 48°W 47°W 46°W 45°W 44°W 43°W 42°W 41°W