


51°W 50°W 49°W 48°W 47°W 46°W 45°W 44°W 43°W 42°W



 DMI

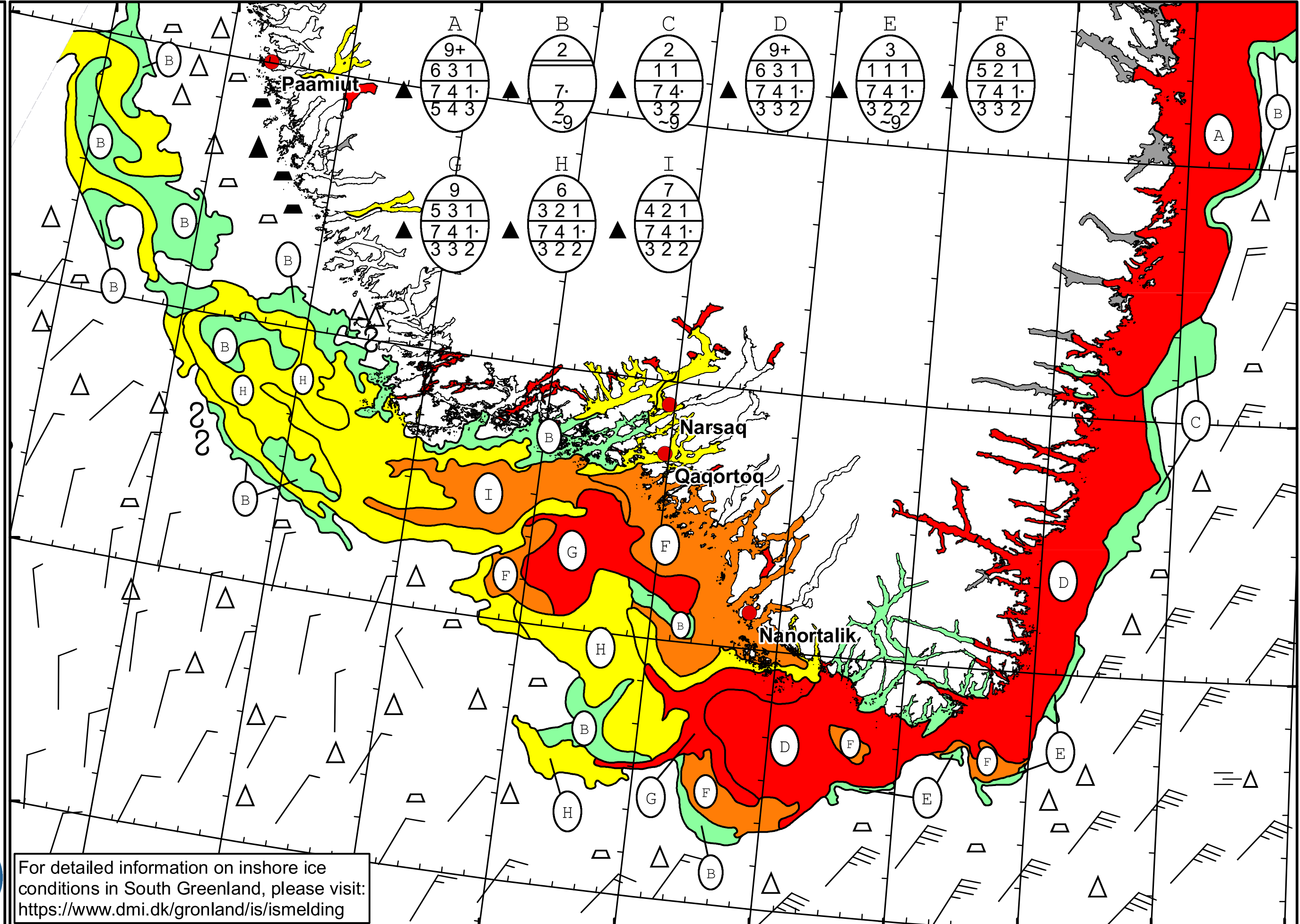
 Ice Service

 Danish Meteorological Institute

 Cape Farewell Ice Chart

 Valid: 02 April 2024, 20:55 UTC

 Next Chart: 05 April 2024



For detailed information on inshore ice conditions in South Greenland, please visit: <https://www.dmi.dk/gronland/is/ismelding>

50°W 49°W 48°W 47°W 46°W 45°W 44°W 43°W 42°W 41°W