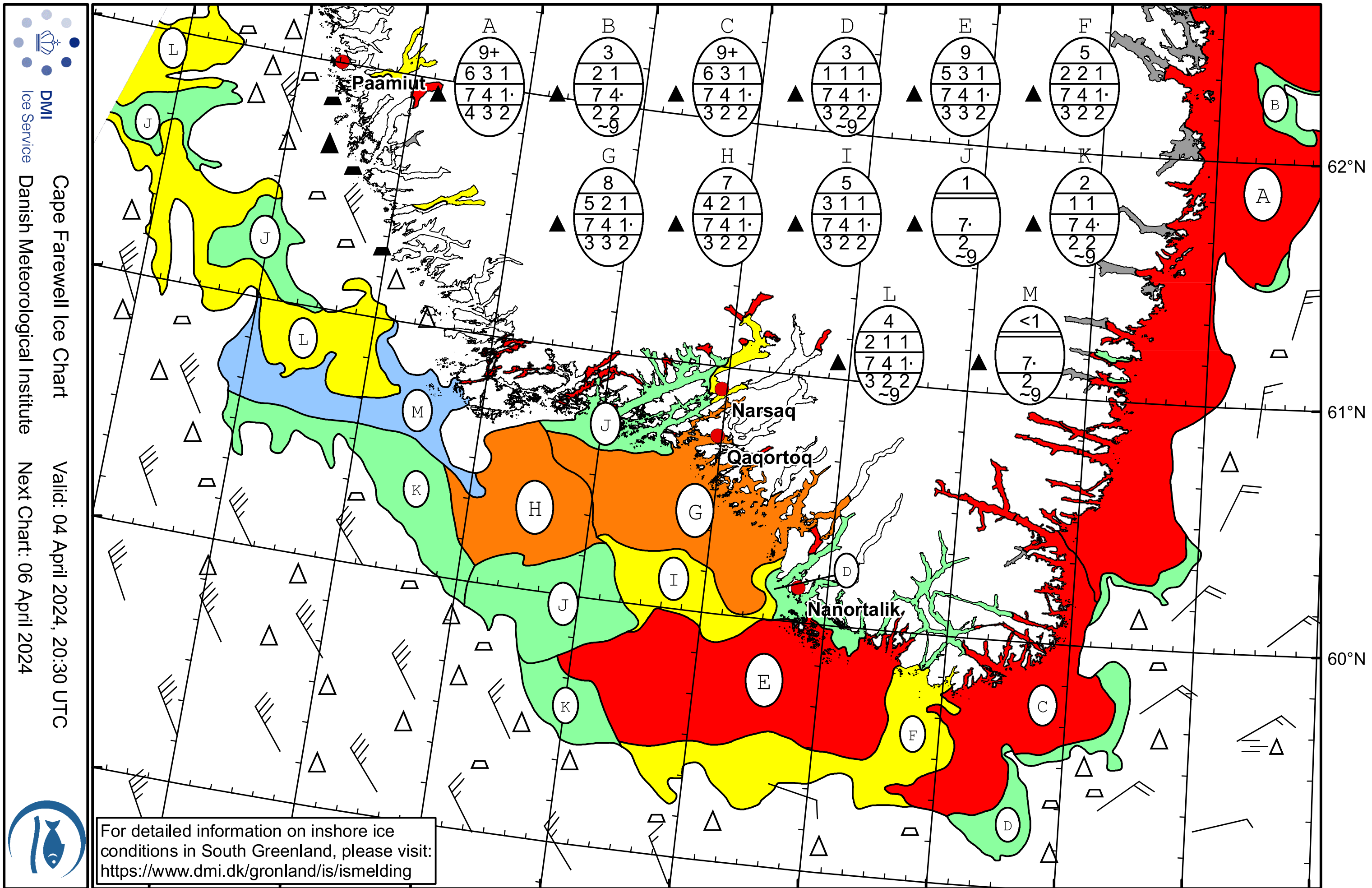


51°W 50°W 49°W 48°W 47°W 46°W 45°W 44°W 43°W 42°W



DMI
 Ice Service
 Danish Meteorological Institute
 Cape Farewell Ice Chart
 Valid: 04 April 2024, 20:30 UTC
 Next Chart: 06 April 2024

For detailed information on inshore ice conditions in South Greenland, please visit:
<https://www.dmi.dk/gronland/is/ismelding>

50°W 49°W 48°W 47°W 46°W 45°W 44°W 43°W 42°W 41°W

62°N
 61°N
 60°N