



55°W 54°W 53°W 52°W 51°W 50°W 49°W 48°W 47°W 46°W 45°W 44°W 43°W 42°W



 DMI




 Ice Service

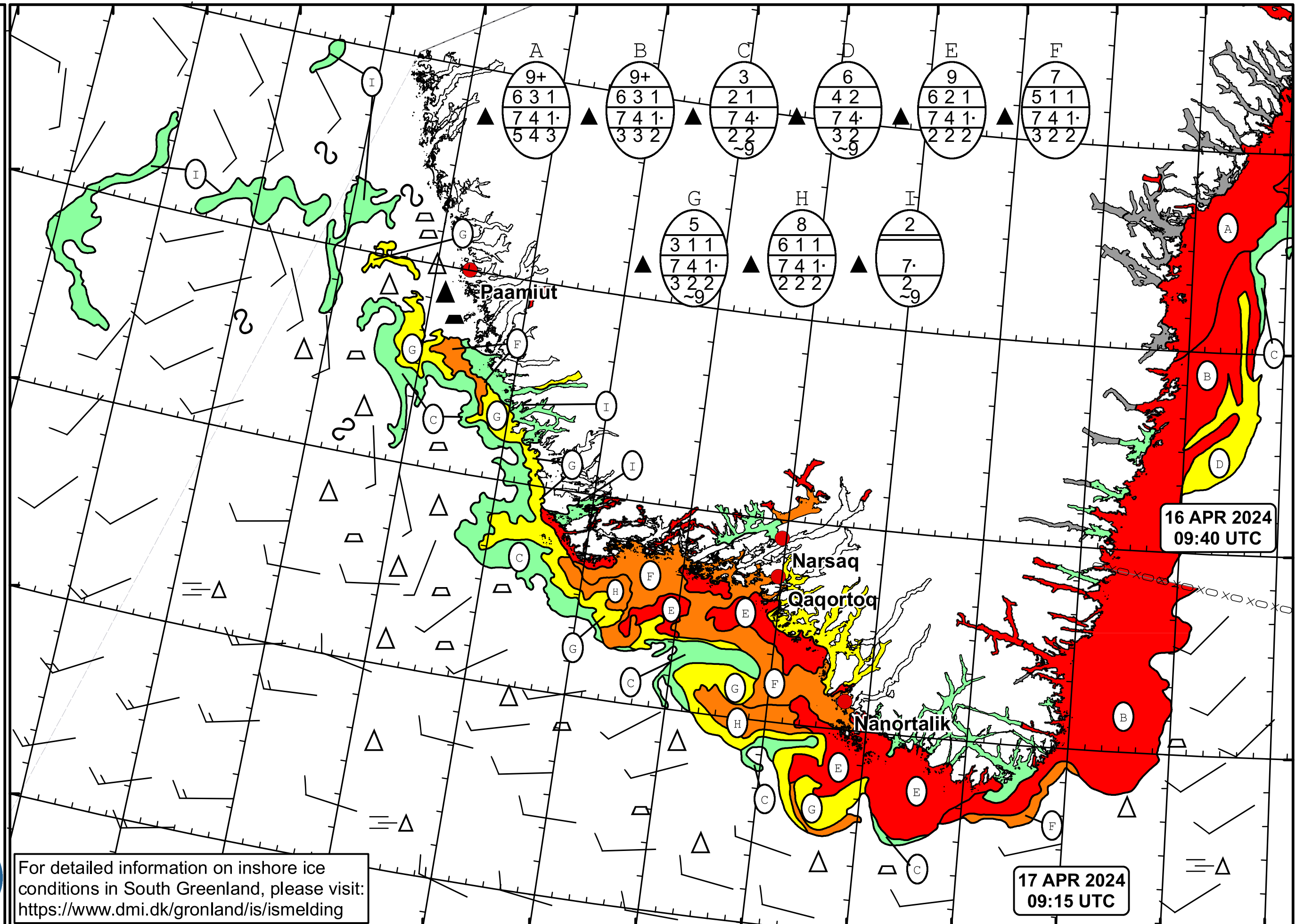
 Cape Farewell Ice Chart

 Danish Meteorological Institute

 Valid: 17 April 2024, 09:15 UTC

 Next Chart: 18 April 2024





16 APR 2024
09:40 UTC

17 APR 2024
09:15 UTC

For detailed information on inshore ice conditions in South Greenland, please visit: <https://www.dmi.dk/gronland/is/ismelding>

52°W 51°W 50°W 49°W 48°W 47°W 46°W 45°W 44°W 43°W 42°W 41°W