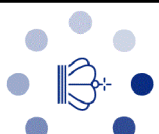


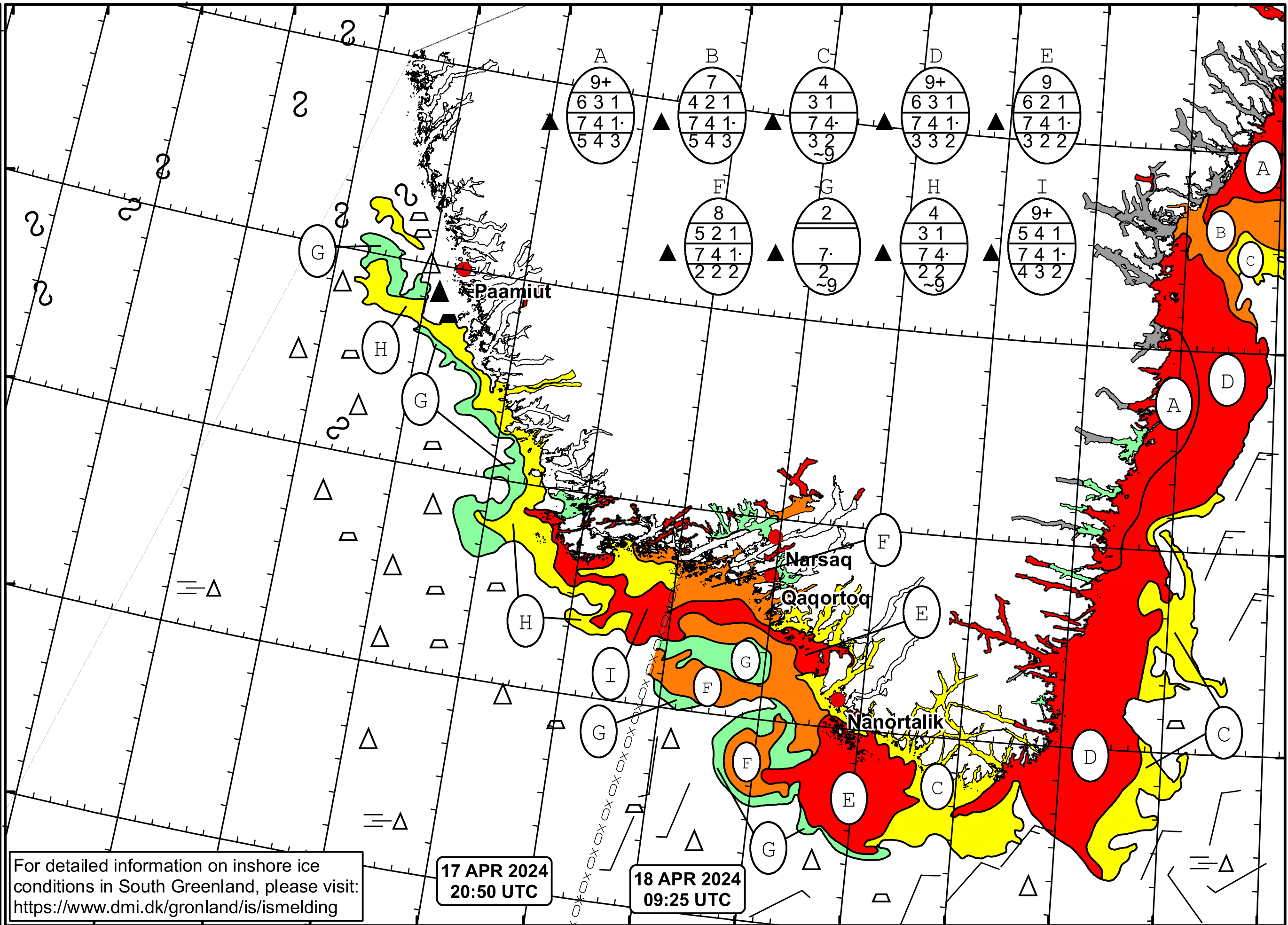
55°W 54°W 53°W 52°W 51°W 50°W 49°W 48°W 47°W 46°W 45°W 44°W 43°W 42°W



DMU
Ice Service

Cape Farewell Ice Chart
Danish Meteorological Institute

Valid: 18 April 2024, 09:25 UTC
Next Chart: 19 April 2024



For detailed information on inshore ice conditions in South Greenland, please visit: <https://www.dmi.dk/gronland/is/ismelding>

17 APR 2024
20:50 UTC

18 APR 2024
09:25 UTC

52°W 51°W 50°W 49°W 48°W 47°W 46°W 45°W 44°W 43°W 42°W 41°W