



51°W 50°W 49°W 48°W 47°W 46°W 45°W 44°W 43°W 42°W 41°W



 DMI




 Ice Service

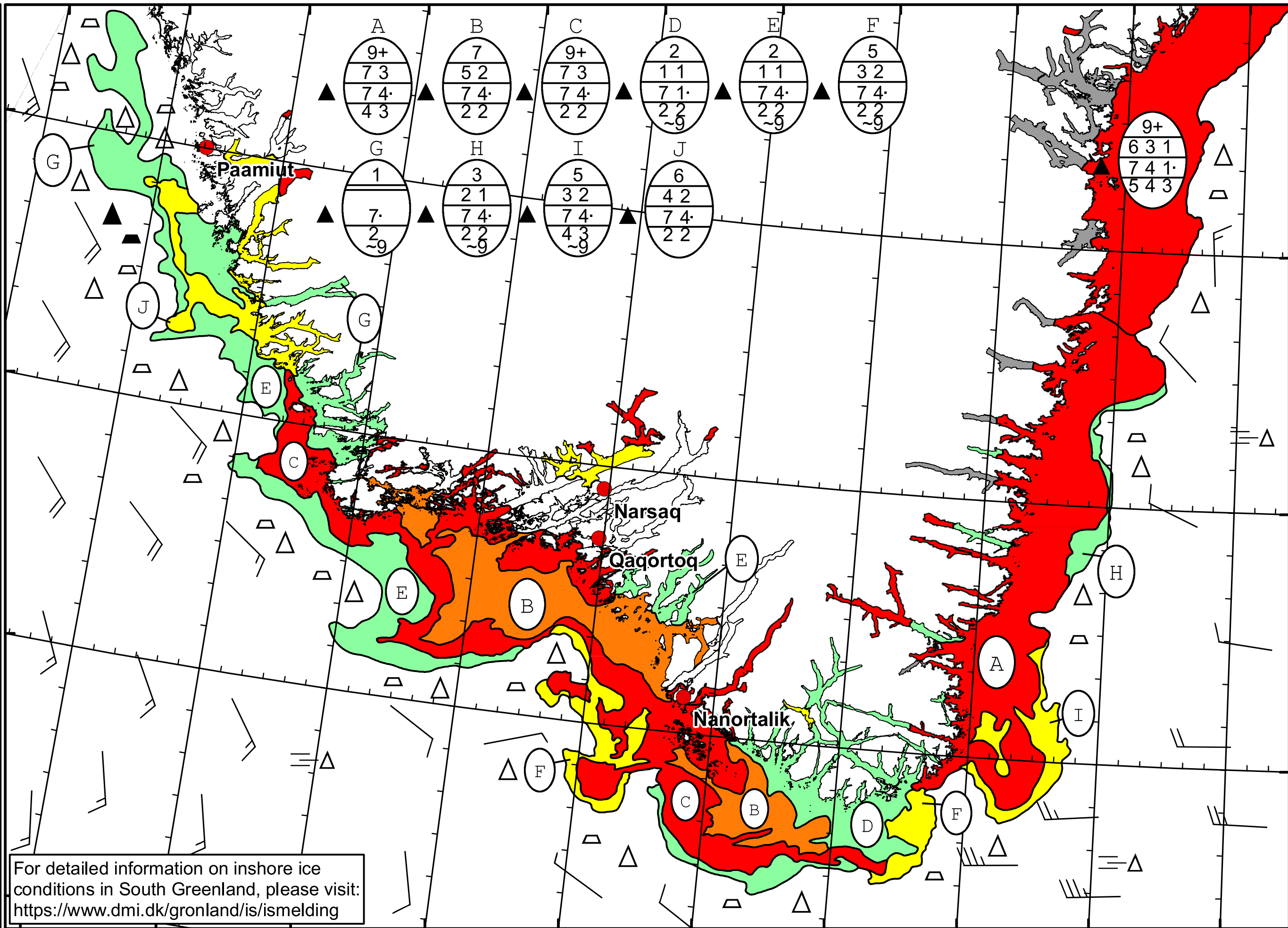
 Cape Farewell Ice Chart

 Danish Meteorological Institute

 Valid: 24 April 2024, 20:45 UTC

 Next Chart: 27 April 2024





For detailed information on inshore ice conditions in South Greenland, please visit: <https://www.dmi.dk/gronland/is/ismelding>

50°W 49°W 48°W 47°W 46°W 45°W 44°W 43°W 42°W 41°W

62°N

61°N

60°N