

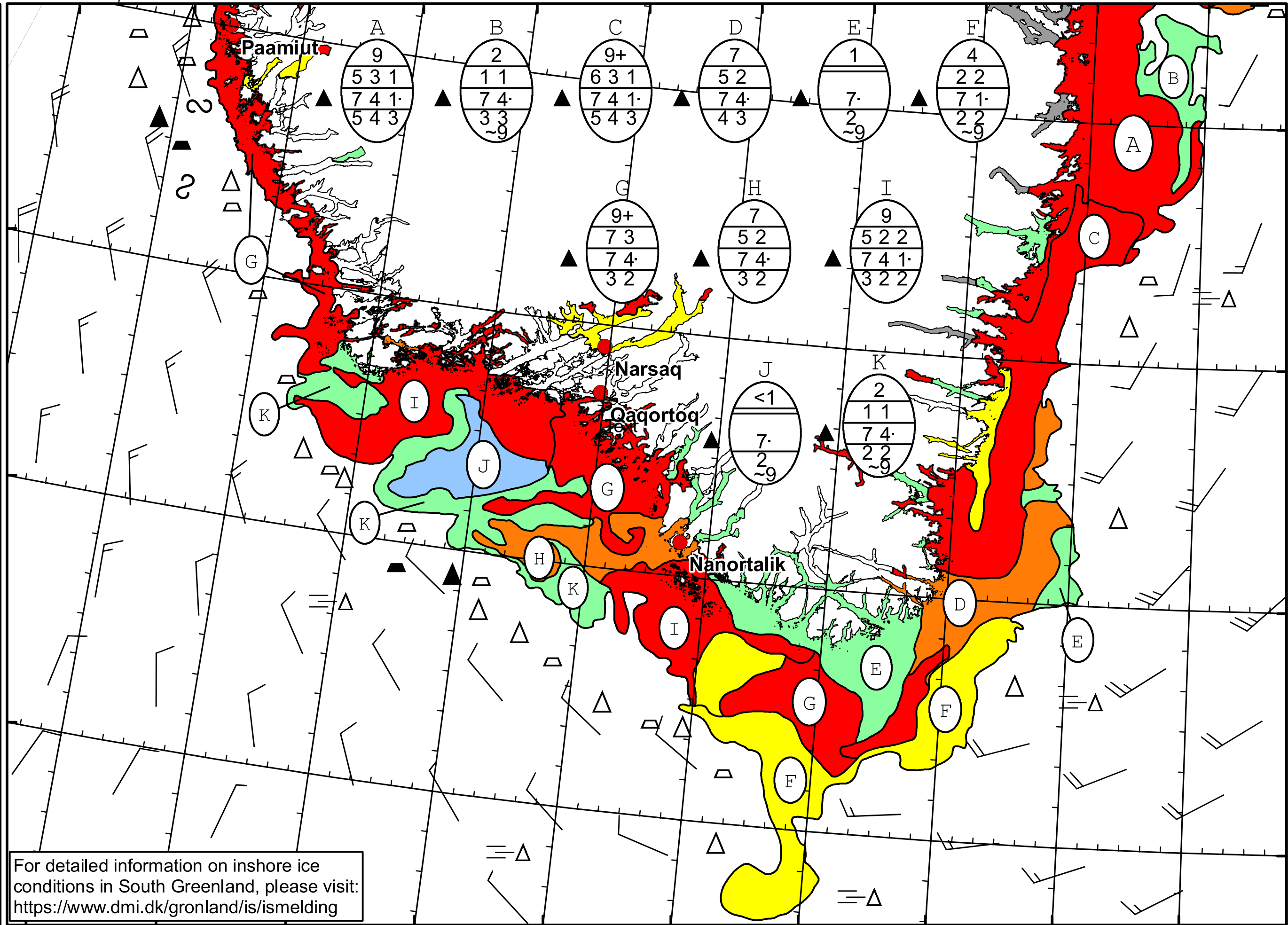


51°W 50°W 49°W 48°W 47°W 46°W 45°W 44°W 43°W 42°W 41°W



**DMI**  
 Ice Service  
**Danish Meteorological Institute**  
 Cape Farewell Ice Chart  
 Valid: 30 April 2024, 20:55 UTC  
 Next Chart: 02 May 2024



For detailed information on inshore ice conditions in South Greenland, please visit:  
<https://www.dmi.dk/gronland/is/ismelding>

50°W 49°W 48°W 47°W 46°W 45°W 44°W 43°W 42°W 41°W