

57°W 56°W 55°W 54°W 53°W 52°W 51°W

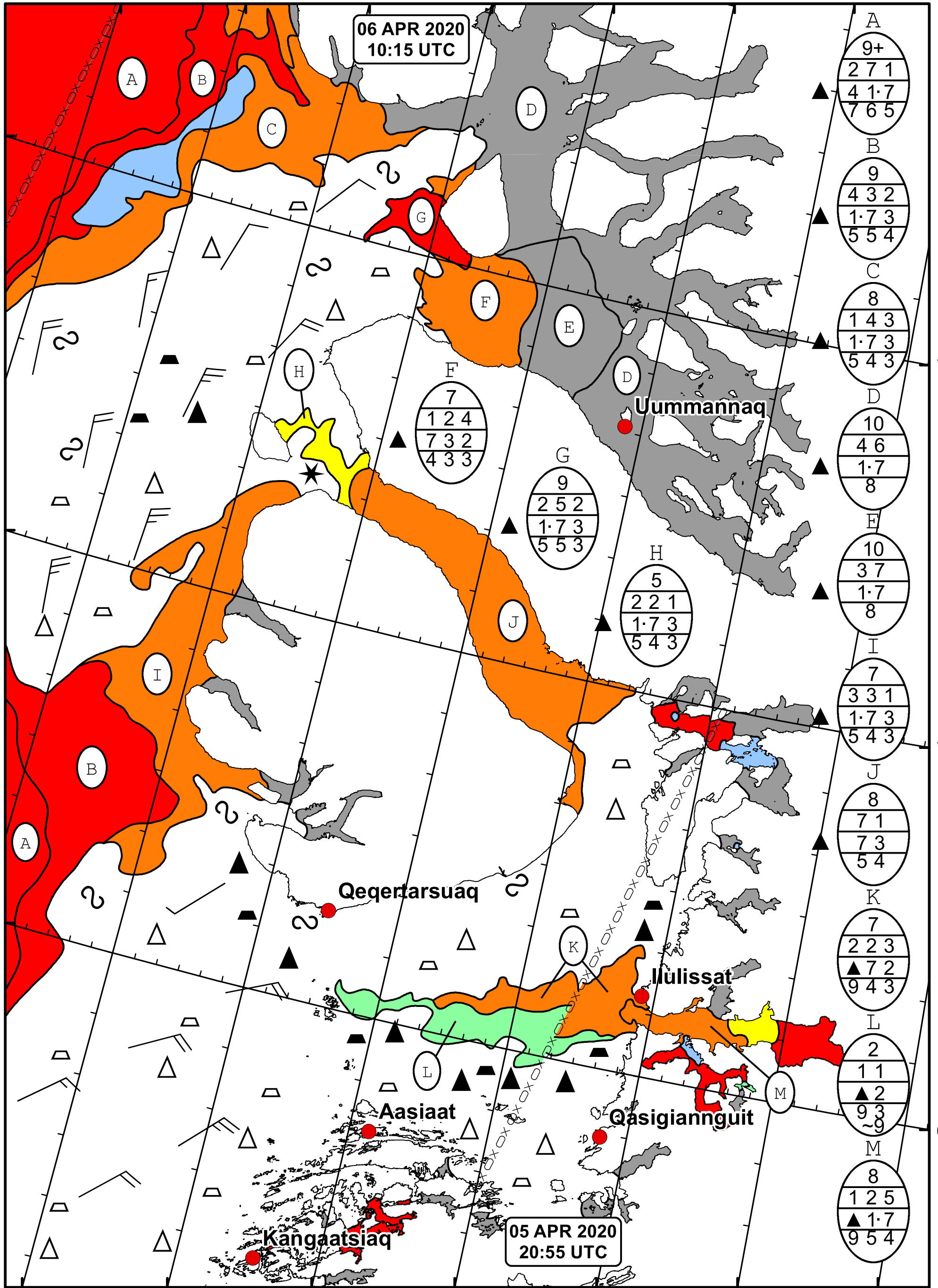
71°N

70°N

69°N

06 APR 2020  
10:15 UTC

05 APR 2020  
20:55 UTC



71°N

70°N

69°N



DMI  
Ice Service

West Greenland Ice Chart

Danish Meteorological Institute

Valid: 06 April 2020, 10:15 UTC

