

58°W 57°W 56°W 55°W 54°W 53°W 52°W 51°W

71°N

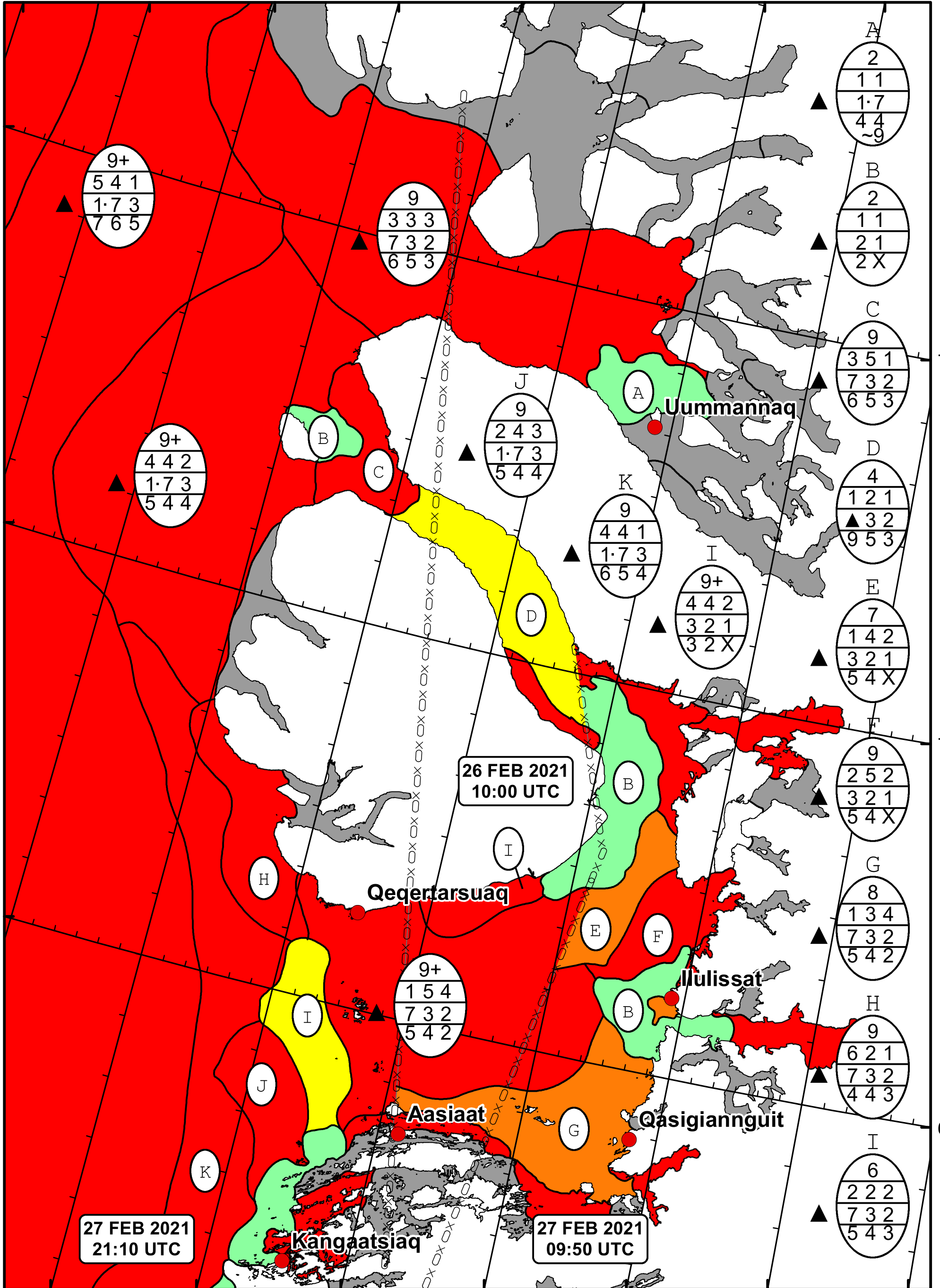
70°N

69°N

71°N

70°N

69°N



9+
5 4 1
1·7 3
7 6 5

9
3 3 3
7 3 2
6 5 3

A
2
1 1
1·7
4 4
~9

B
2
1 1
2 1
2 X

C
9
3 5 1
7 3 2
6 5 3

J
9
2 4 3
1·7 3
5 4 4

K
9
4 4 1
1·7 3
6 5 4

D
4
1 2 1
▲ 3 2
9 5 3

9+
4 4 2
1·7 3
5 4 4

I
9+
4 4 2
3 2 1
3 2 X

E
7
1 4 2
3 2 1
5 4 X

26 FEB 2021 10:00 UTC

F
9
2 5 2
3 2 1
5 4 X

Qeqertarsuaq

G
8
1 3 4
7 3 2
5 4 2

9+
1 5 4
7 3 2
5 4 2

H
9
6 2 1
7 3 2
4 4 3

Aasiaat

Qasigiannuit

I
6
2 2 2
7 3 2
5 4 3

27 FEB 2021 21:10 UTC

27 FEB 2021 09:50 UTC

Kangaatsiaq



West Greenland Ice Chart

DMI

Ice Service Danish Meteorological Institute

Valid: 27 February 2021, 21:10 UTC

