

58°W 57°W 56°W 55°W 54°W 53°W 52°W 51°W

71°N

70°N

69°N

71°N

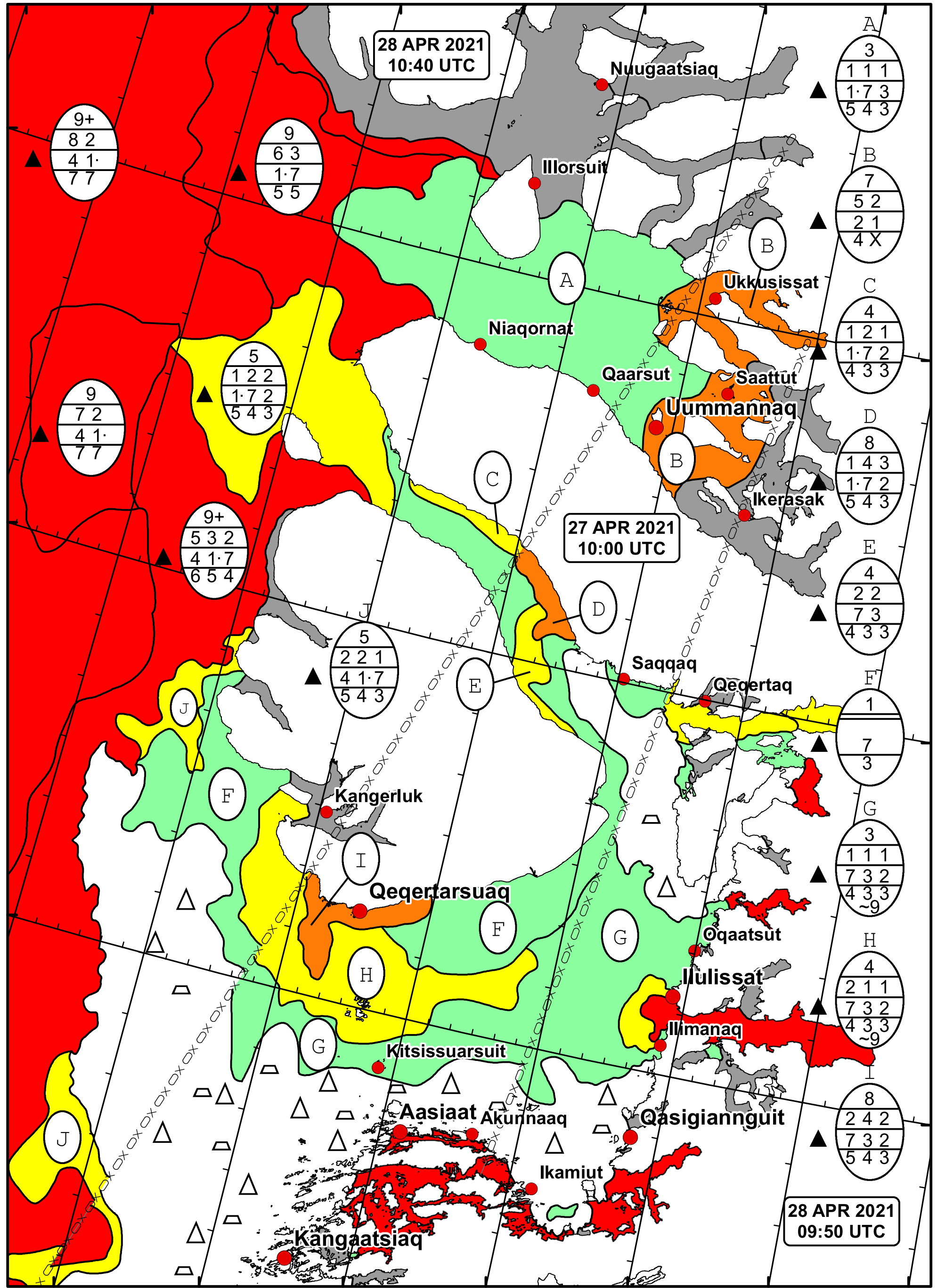
70°N

69°N

28 APR 2021
10:40 UTC

27 APR 2021
10:00 UTC

28 APR 2021
09:50 UTC



9+
8 2
4 1
7 7

9
6 3
1 7
5 5

3
1 1 1
1 7 3
5 4 3

7
5 2
2 1
4 X

4
1 2 1
1 7 2
4 3 3

8
1 4 3
1 7 2
5 4 3

4
2 2
7 3
4 3 3

1
7
3

3
1 1 1
7 3 2
4 3 3
~9

4
2 1 1
7 3 2
4 3 3
~9

8
2 4 2
7 3 2
5 4 3



West Greenland Ice Chart
 DMI Danish Meteorological Institute
 Ice Service Valid: 28 April 2021, 10:00 UTC

