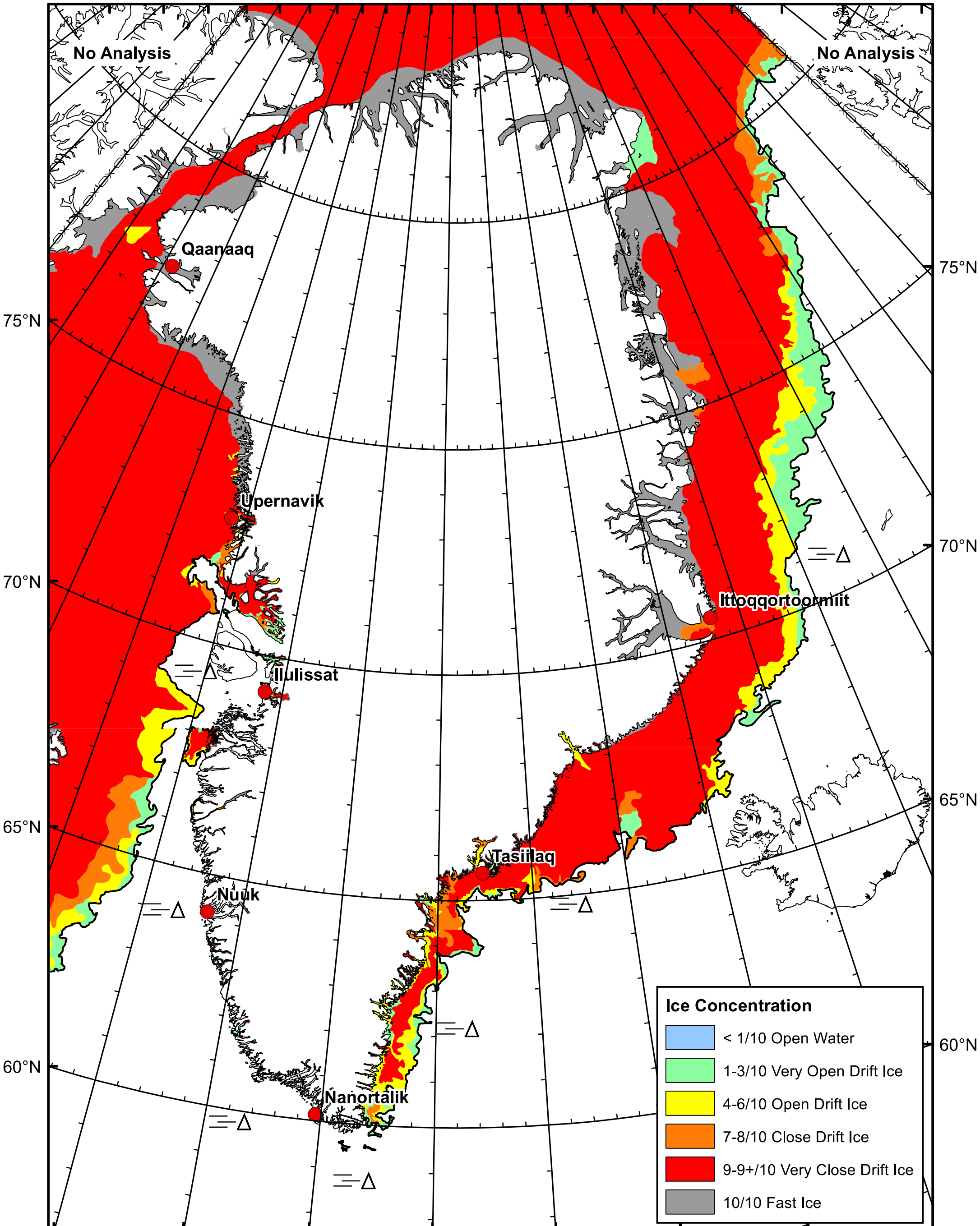


95°W 90°W 80°W 70°W 60°W 45°W 30°W 15°W 5°W 0° 5°E 10°E 15°E 20°E 25°E



**Ice Concentration**

- < 1/10 Open Water
- 1-3/10 Very Open Drift Ice
- 4-6/10 Open Drift Ice
- 7-8/10 Close Drift Ice
- 9-9+/10 Very Close Drift Ice
- 10/10 Fast Ice



Greenland Ice Chart  
Danish Meteorological Institute Valid: 30 January 2022, 12:00 UTC

