



24°W 22°W 20°W 18°W 16°W 14°W 12°W 10°W 8°W 6°W 4°W 2°W 0° 2°E



 DMI

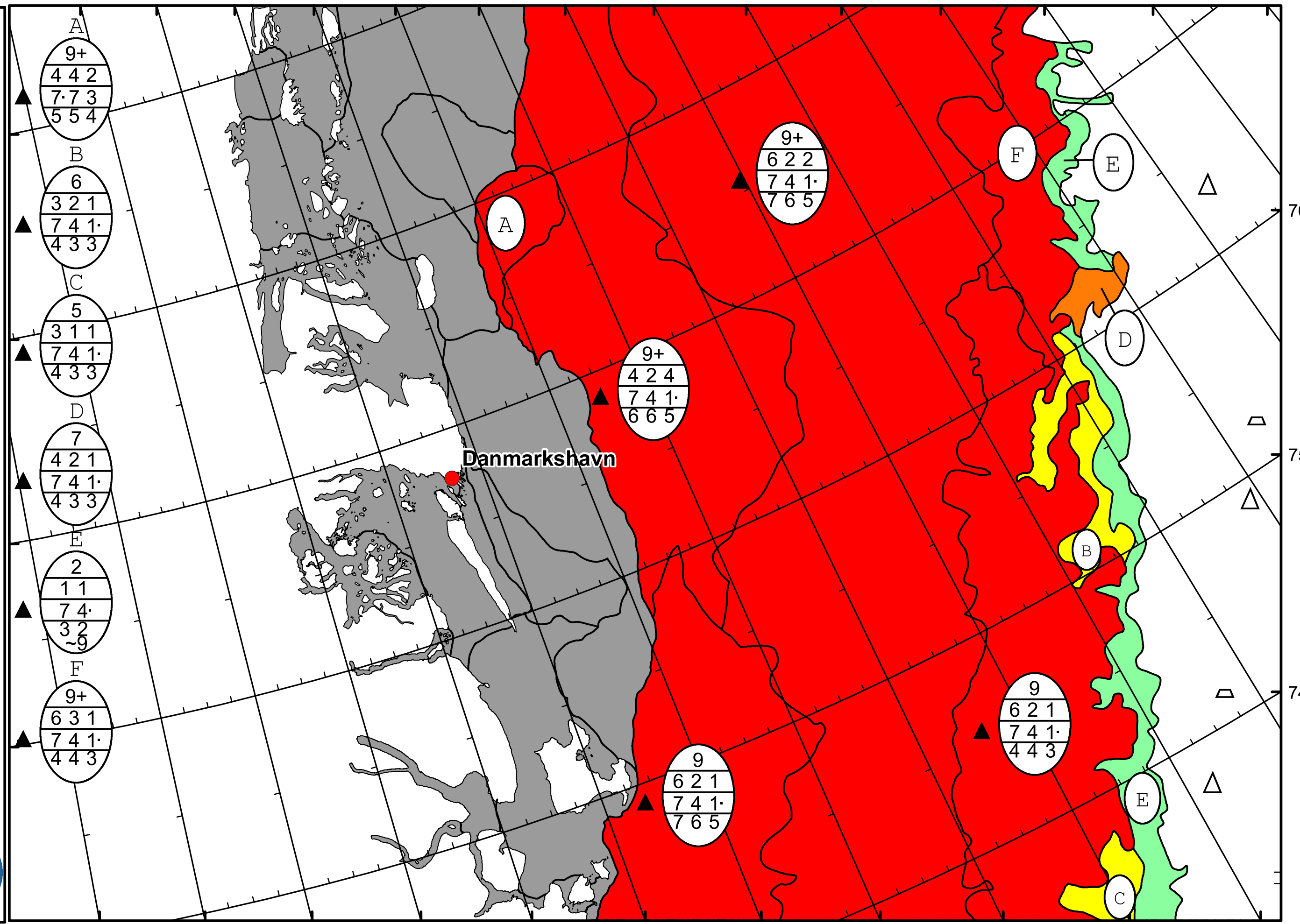


 Ice Service

 Danish Meteorological Institute

 East Greenland Ice Chart

 Valid: 11 April 2024, 07:30 UTC



28°W 26°W 24°W 22°W 20°W 18°W 16°W 14°W 12°W 10°W 8°W

76°N
75°N
74°N