




24°W 22°W 20°W 18°W 16°W 14°W 12°W 10°W 8°W 6°W 4°W 2°W 0° 2°E


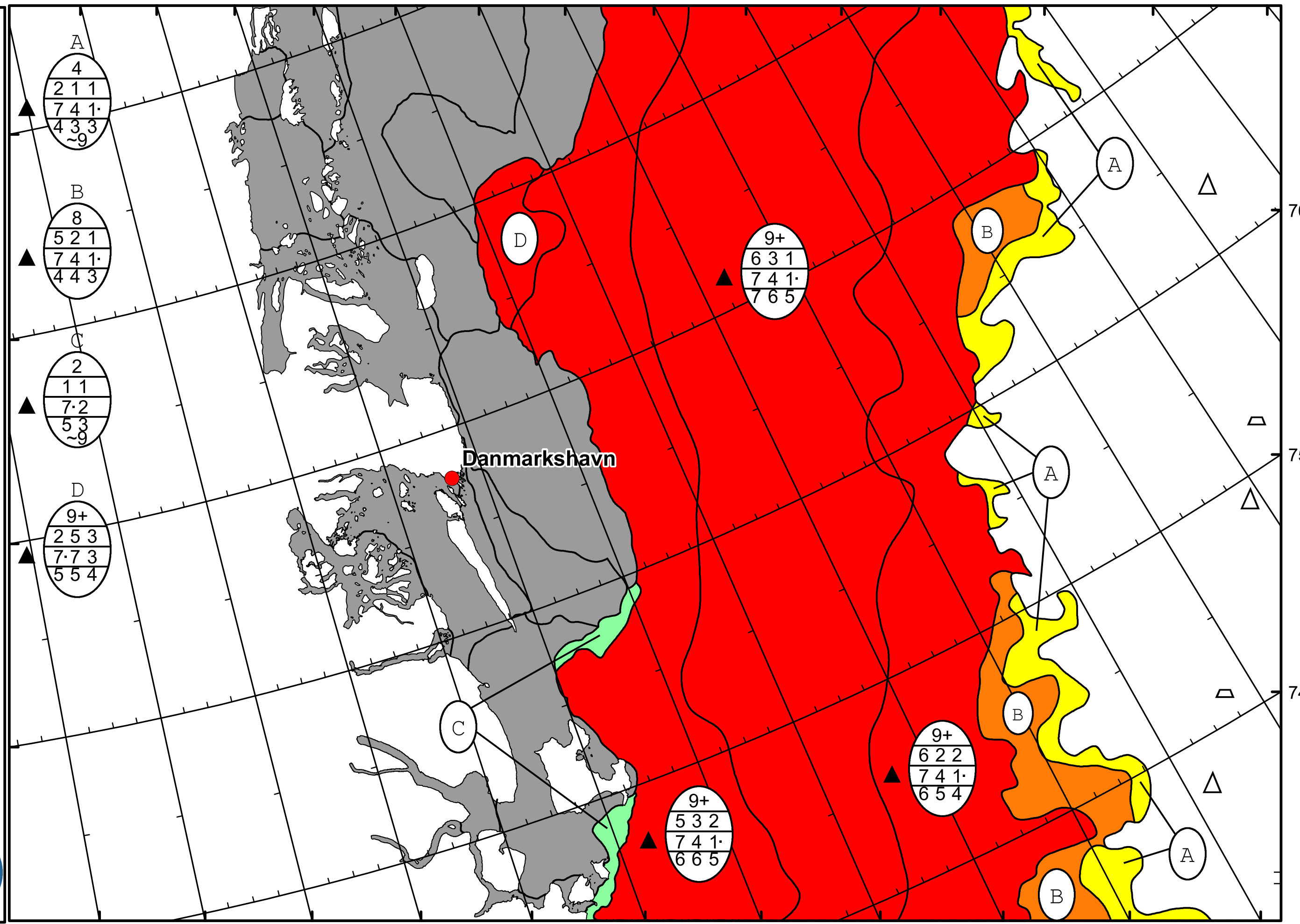
DMI

 Ice Service

East Greenland Ice Chart

 Danish Meteorological Institute

Valid: 17 April 2024, 08:20 UTC

A

4
2 1 1
7 4 1
4 3 3
~9

B

8
5 2 1
7 4 1
4 4 3

C

2
1 1
7 2
5 3
~9

D

9+
2 5 3
7 7 3
5 5 4

9+

6 3 1
7 4 1
7 6 5

9+

6 2 2
7 4 1
6 5 4

9+

5 3 2
7 4 1
6 6 5

28°W 26°W 24°W 22°W 20°W 18°W 16°W 14°W 12°W 10°W 8°W

76°N

75°N

74°N