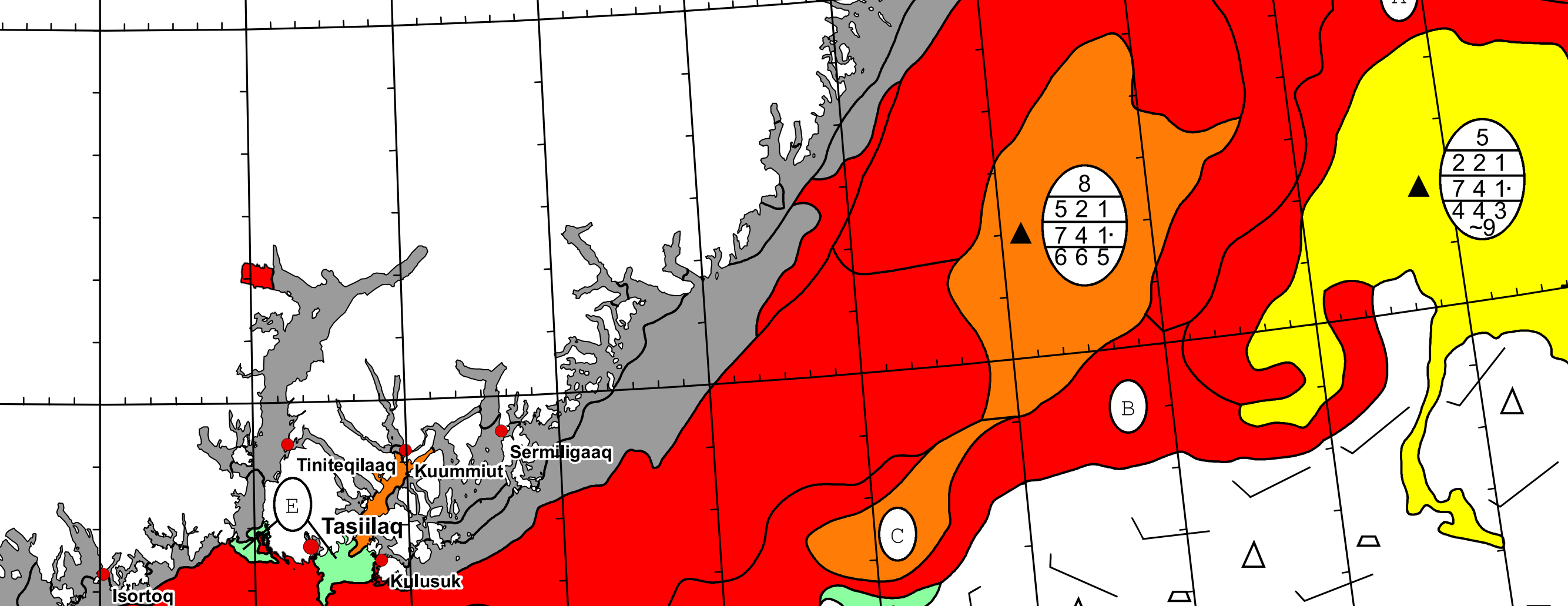
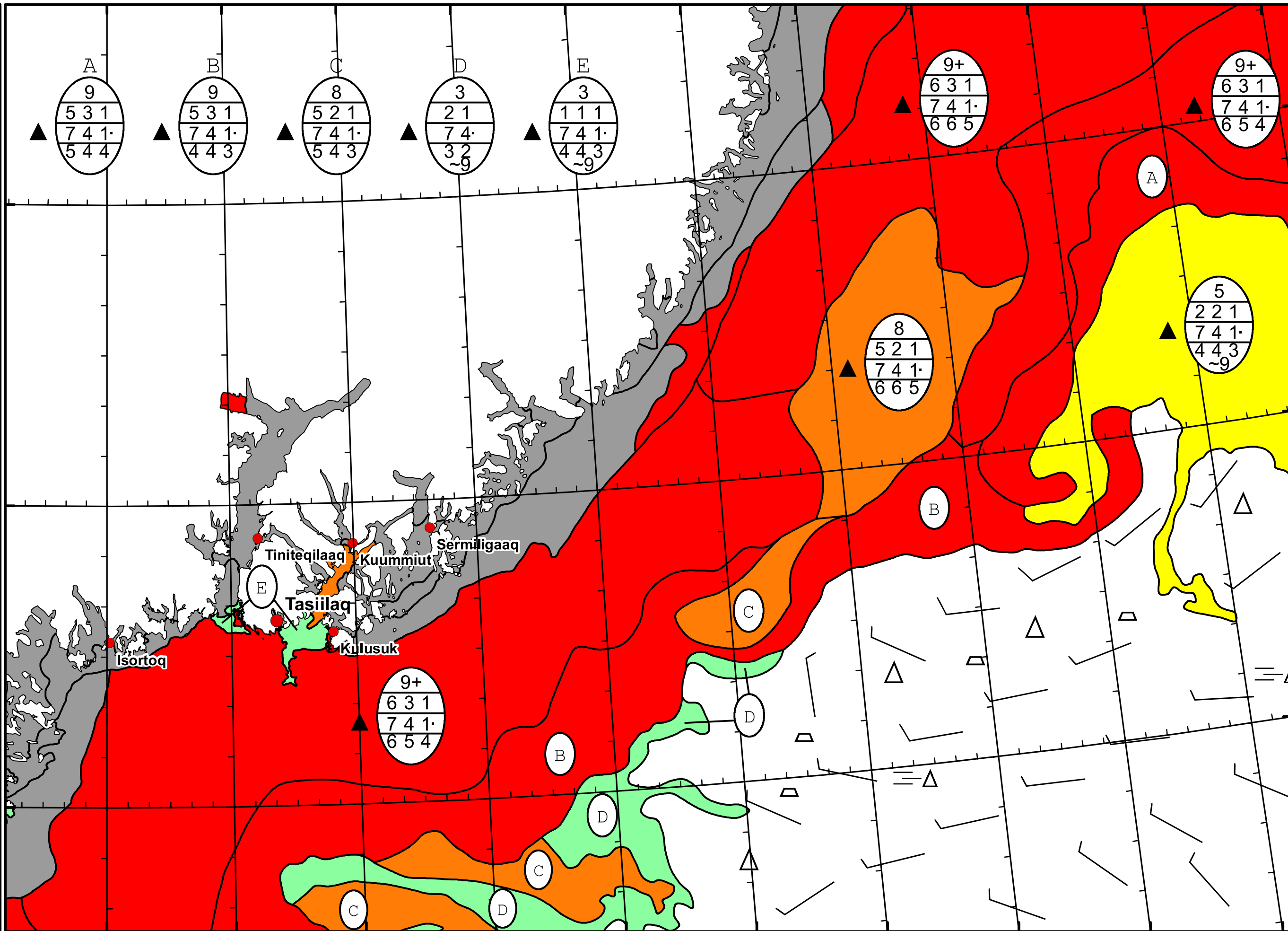
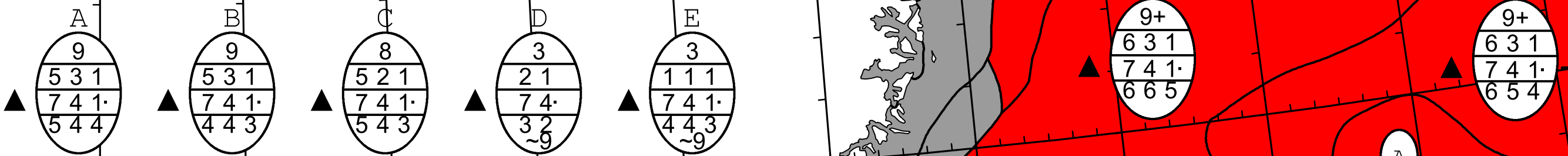





39°W 38°W 37°W 36°W 35°W 34°W 33°W 32°W 31°W 30°W 29°W



39°W 38°W 37°W 36°W 35°W 34°W 33°W 32°W 31°W 30°W


  
 DMI
   

  
 Ice Service
   
 Danish Meteorological Institute
   
 East Greenland Ice Chart
   
 Valid: 20 April 2024, 08:50 UTC
   


Tiniteqilaaq
   
 Kuummiut
   
 Sermiligaaq
   
 Tasiilaq
   
 Kulusuk
   
 Isortoq

67°N
   
 66°N
   
 65°N