

59°W 58°W 57°W 56°W 55°W 54°W 53°W 52°W

67°N

68°N

66°N

67°N

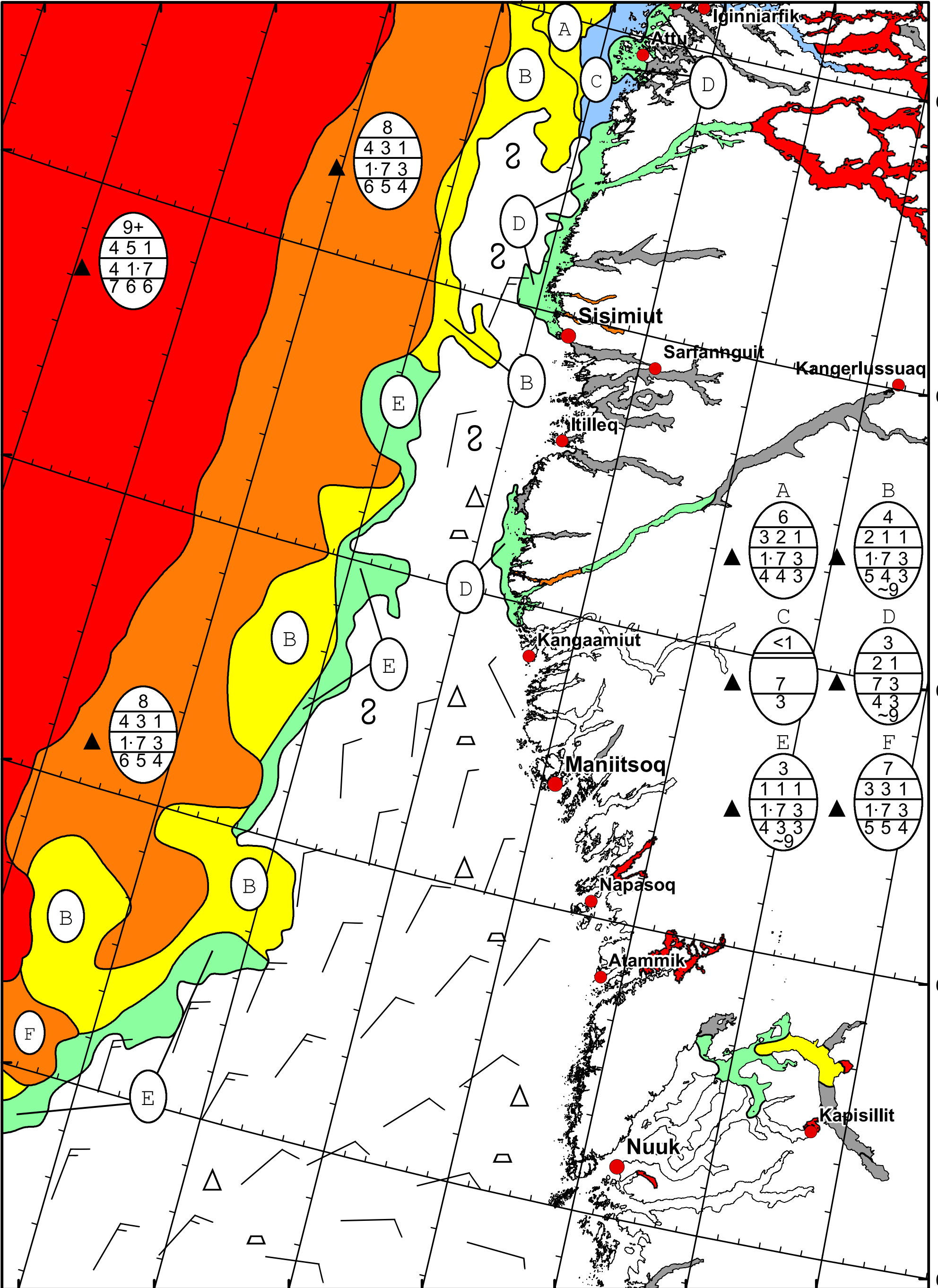
65°N

66°N

64°N

65°N

64°N



9+
4 5 1
4 1.7
7 6 6

8
4 3 1
1.7 3
6 5 4

8
4 3 1
1.7 3
6 5 4

A
6
3 2 1
1.7 3
4 4 3

B
4
2 1 1
1.7 3
5 4 3
~9

C
<1
7
3

D
3
2 1
7 3
4 3
~9

E
3
1 1 1
1.7 3
4 3 3
~9

F
7
3 3 1
1.7 3
5 5 4



DMI
Ice Service

West Greenland Ice Chart

Danish Meteorological Institute

Valid: 23 April 2022, 10:10 UTC

