

59°W 58°W 57°W 56°W 55°W 54°W 53°W 52°W

67°N

68°N

66°N

67°N

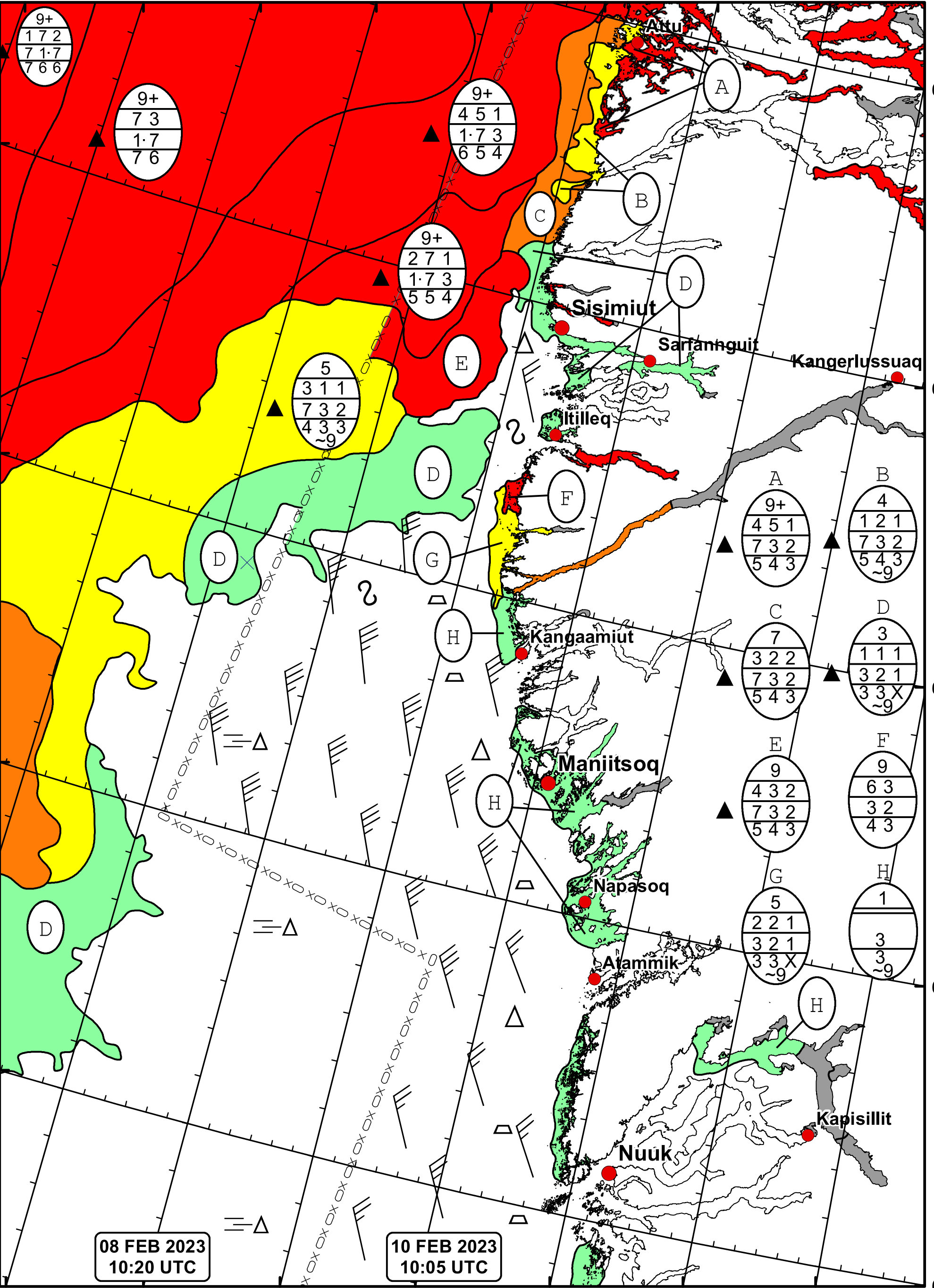
65°N

66°N

64°N

65°N

64°N



08 FEB 2023  
10:20 UTC

10 FEB 2023  
10:05 UTC



DMI  
Ice Service

West Greenland Ice Chart

Danish Meteorological Institute

Valid: 10 February 2023, 10:05 UTC

