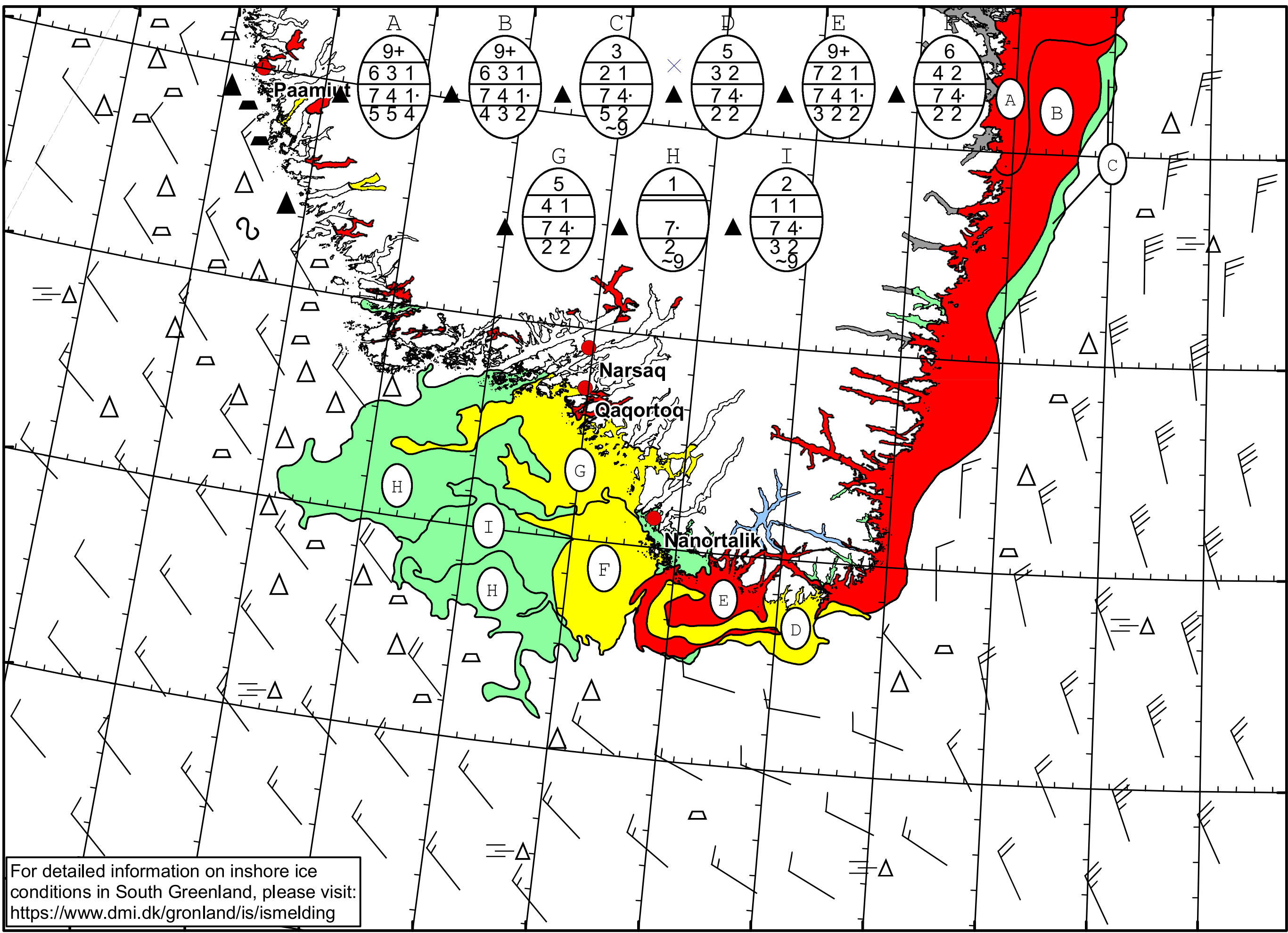


52°W 51°W 50°W 49°W 48°W 47°W 46°W 45°W 44°W 43°W 42°W 41°W 40°W



Cape Farewell Ice Chart  
 Valid: 11 May 2024, 20:45 UTC  
 Next Chart: 14 May 2024



For detailed information on inshore ice conditions in South Greenland, please visit:  
<https://www.dmi.dk/gronland/is/ismelding>

50°W 49°W 48°W 47°W 46°W 45°W 44°W 43°W 42°W 41°W 40°W

62°N  
 61°N  
 60°N  
 59°N