

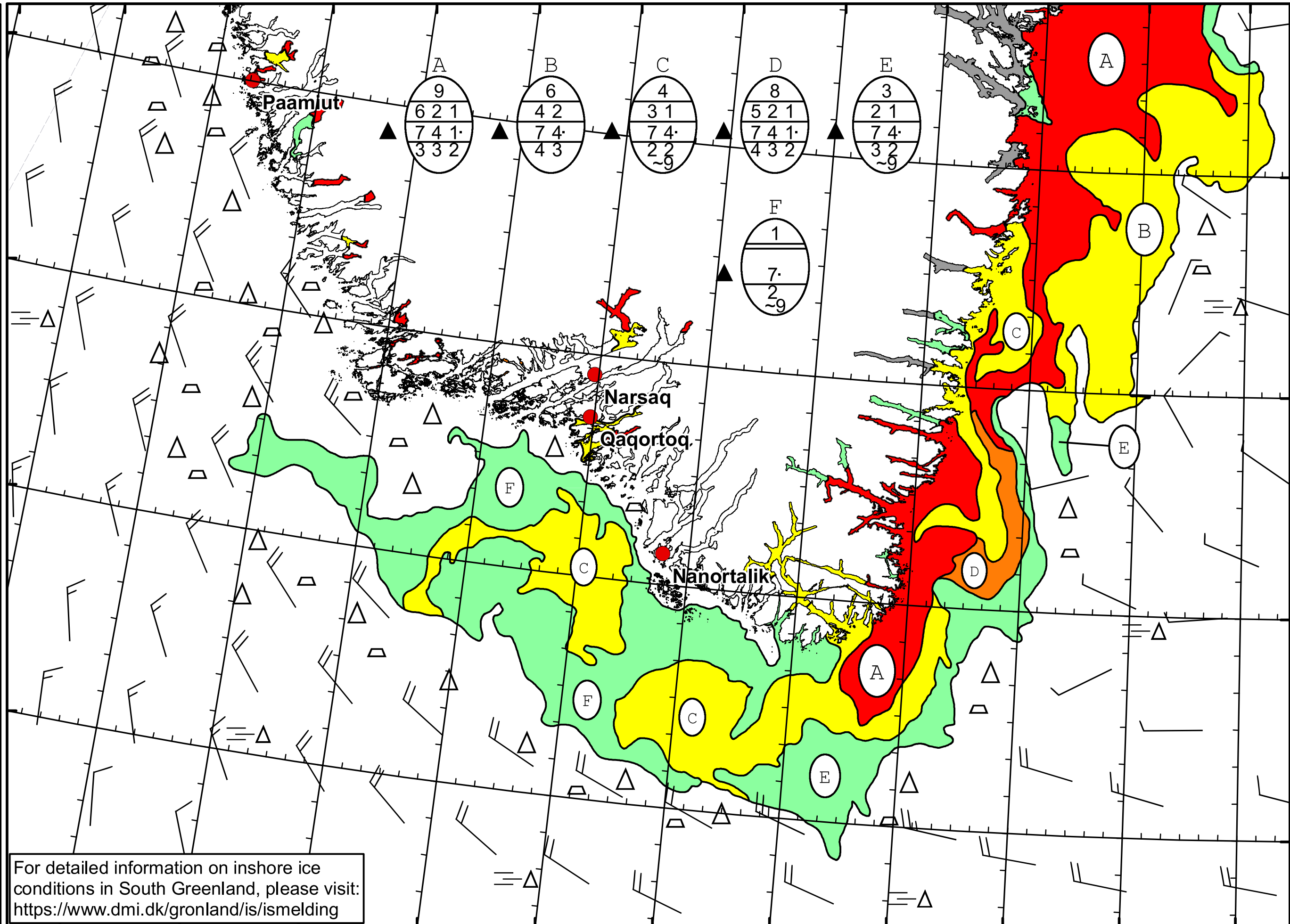


52°W 51°W 50°W 49°W 48°W 47°W 46°W 45°W 44°W 43°W 42°W 41°W 40°W



DMI
 Ice Service
Cape Farewell Ice Chart
 Danish Meteorological Institute
 Valid: 15 May 2024, 20:45 UTC
 Next Chart: 18 May 2024



For detailed information on inshore ice conditions in South Greenland, please visit: <https://www.dmi.dk/gronland/is/ismelding>

50°W 49°W 48°W 47°W 46°W 45°W 44°W 43°W 42°W 41°W 40°W