



51°W 50°W 49°W 48°W 47°W 46°W 45°W 44°W 43°W 42°W 41°W

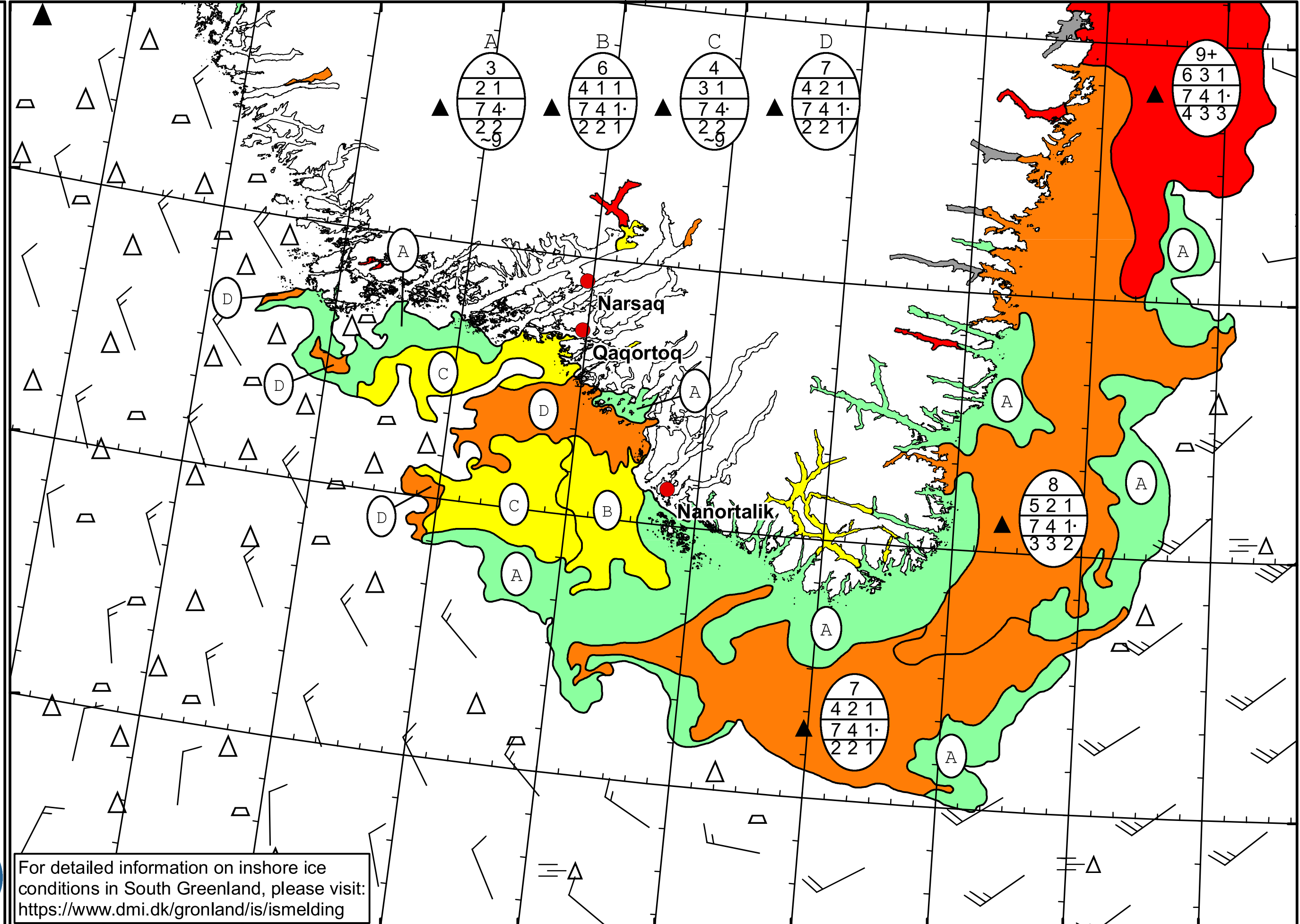
62°N

61°N

60°N

59°N



DMI
 Ice Service
Capre Farewell Ice Chart
 Danish Meteorological Institute
 Valid: 29 May 2024, 20:30 UTC
 Next Chart: 31 May 2024



For detailed information on inshore ice conditions in South Greenland, please visit: <https://www.dmi.dk/gronland/is/ismelding>

49°W 48°W 47°W 46°W 45°W 44°W 43°W 42°W 41°W