



53°W 52°W 51°W 50°W 49°W 48°W 47°W 46°W 45°W 44°W 43°W 42°W 41°W 40°W 39°W



 DMI



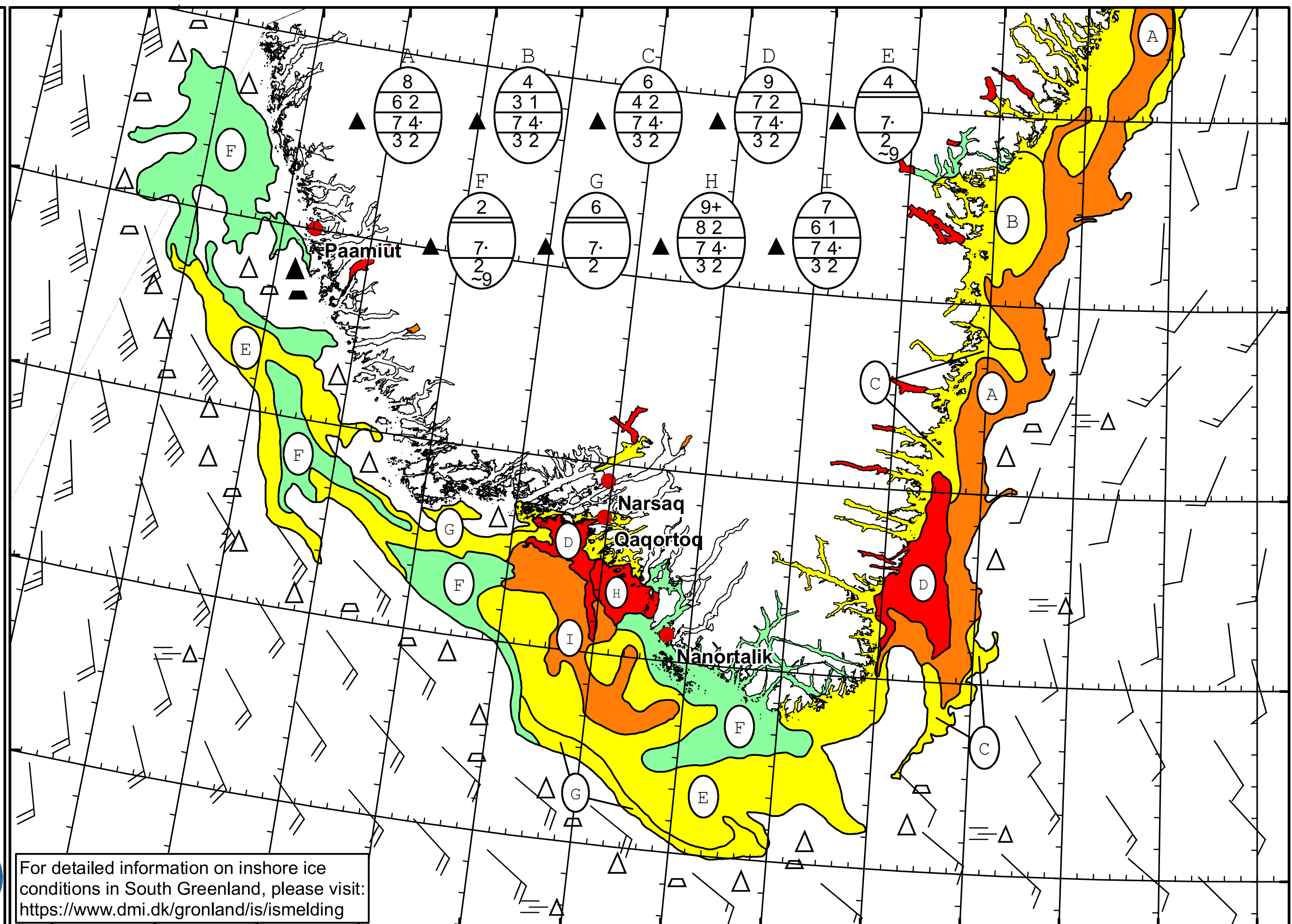
 Ice Service

 Cape Farewell Ice Chart

 Danish Meteorological Institute

 Valid: 27 June 2024, 09:40 UTC

 Next Chart: 28 June 2024



For detailed information on inshore ice conditions in South Greenland, please visit:
<https://www.dmi.dk/gronland/is/ismelding>

51°W 50°W 49°W 48°W 47°W 46°W 45°W 44°W 43°W 42°W 41°W 40°W 39°W